
View Server - User Guide

EOX IT Services GmbH

Apr 17, 2024

CONTENTS

1	Introduction	1
1.1	Authentication	2
2	Web Client	3
2.1	Minimum Required Resources	3
2.2	Interactive Tutorial	3
2.3	Map	3
2.4	3D View	5
2.5	2D View	7
2.6	Timeslider	10
2.7	Search Results	11
2.8	Filters	12
2.9	Map Layers	14
2.10	Details Display	14
2.11	Download	21
2.12	WPS Processes	24
2.13	Saving the session	28
3	Searching	29
3.1	Responses	29
3.2	Filters	30
4	Viewing	31
4.1	Performance optimized service	31
4.2	Flexible service	33
5	Downloading	35
6	Sample Service Requests	37
6.1	Web Client	37
6.2	Performance optimized viewing	37
6.3	Flexible viewing	44
6.4	Searching	53
6.5	Downloading	63
6.6	Processing	71

INTRODUCTION

This is the User Guide of the View Server (VS). The intended readers are users of the web client shown below and external services provided by the View Server.

These provided external services are services for searching, viewing, and downloading of Earth Observation (EO) data. Service endpoints optimized for performance as well as for flexibility are provided alongside each other.



Figure 1.1: *Web Client*

Continue reading to understand the details of the provided *Web Client*.

Available production deployments of the VS referencing data from Copernicus Space Component Data Access (CSCDA) are on:

- VHR IMAGE 2018: <https://sso.vhr18.pass.copernicus.eu>
- Emergency <https://sso.emg.pass.copernicus.eu>
- Copernicus DEM Open <https://sso.demf.pass.copernicus.eu>
- Copernicus DEM Restricted <https://sso.dem.pass.copernicus.eu>
- Frontex Emergency <https://sso.frtx-emg.pass.copernicus.eu>
- SatCen Emergency <https://sso.sace-emg.pass.copernicus.eu>
- Csea Emergency <https://sso.csea-emg.pass.copernicus.eu>
- VHR IMAGE 2015 <https://sso.vhr15.pass.copernicus.eu>

- VHR1-2 Urban Atlas 2012 <https://sso.ua2012.pass.copernicus.eu>
- DWH_MG2_CORE_01 - Optical HR Pan EU Coverages (Image2012) <https://sso.core12.pass.copernicus.eu>
- DWH_MG2_CORE_02 - Optical HR Pan EU coverages (Image2006 and Image2009) <https://sso.core09.pass.copernicus.eu>
- VHR IMAGE 2021 <https://sso.vhr21.pass.copernicus.eu>

1.1 Authentication

Authentication/Authorization to the PASS production deployments is linked to the main authentication framework of CSCDA and both systems share login sessions, the user needs to log in just once.

Note that the used authentication system of CSCDA is based on SAML protocol, which at the moment of writing this text is not supported for authentication by modern GIS browsers (QGIS 3.x, ArcMap, ArcGIS Pro).

WEB CLIENT

The most comfortable way to exploit the functionalities of the View Server (VS) is via the built-in [web client](#). This client is based on the open source [eoxc](#) library and provides an intuitively to use interactive graphical user interface running in the user's web browser.

2.1 Minimum Required Resources

The default 2D version of the web client can be used with any modern browser including even mobile versions with some usability limitations.

In order to run the web client in 3D mode for example for the DEM collections, minimum hardware and software requirements are basically attached to WebGL (Web Graphics Library) resource requirements, as the 3D client software requires a browser that supports WebGL. The table below shows the minimum required versions of major web browsers that have support of WebGL 1.0. Support has been verified using the BrowserStack service. For a complete list of supported browser versions please refer to <https://caniuse.com/webgl>.

Mozilla Firefox	Google Chrome	Apple Safari	MS Edge
>= 4	>= 8	>= 5.1	>= 12

2.2 Interactive Tutorial

When the web client is opened for the first time a short interactive tutorial starts as shown in [Figure 2.2.1](#) below. It guides the user through the main features and elements.

The tutorial can be started again anytime by clicking the *book* icon in the bottom right of the window.

2.3 Map

The main map view is for visualization and interactively browsing through available satellite data. There are two modes or types of visualization, 2D and 3D. Users can switch between the two modes by clicking the 2D/3D switch button in the top center of the map.

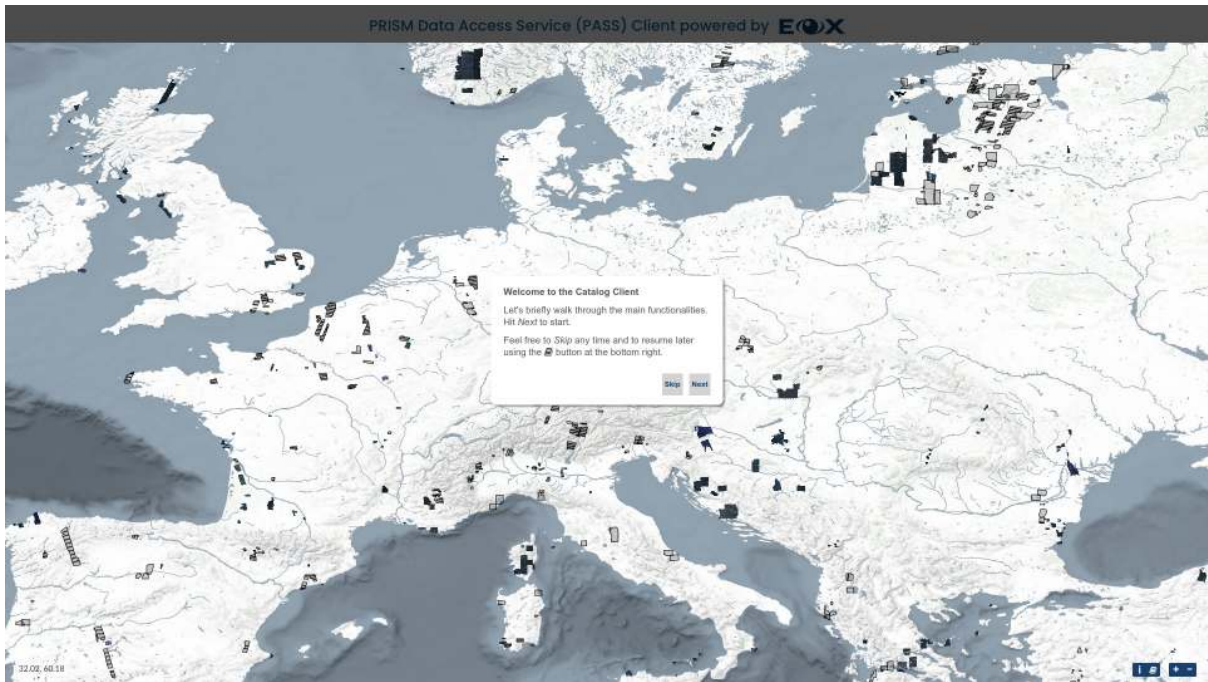


Figure 2.2.1: Web Client Tutorial - Start

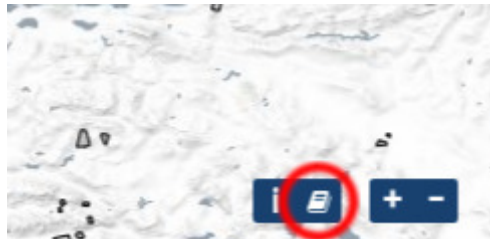


Figure 2.2.2: Web Client Tutorial Button



Figure 2.3.1: 3D/2D visualization switch button

2.4 3D View

3D mode launches a virtual three dimensional globe scene, provided with terrain data.

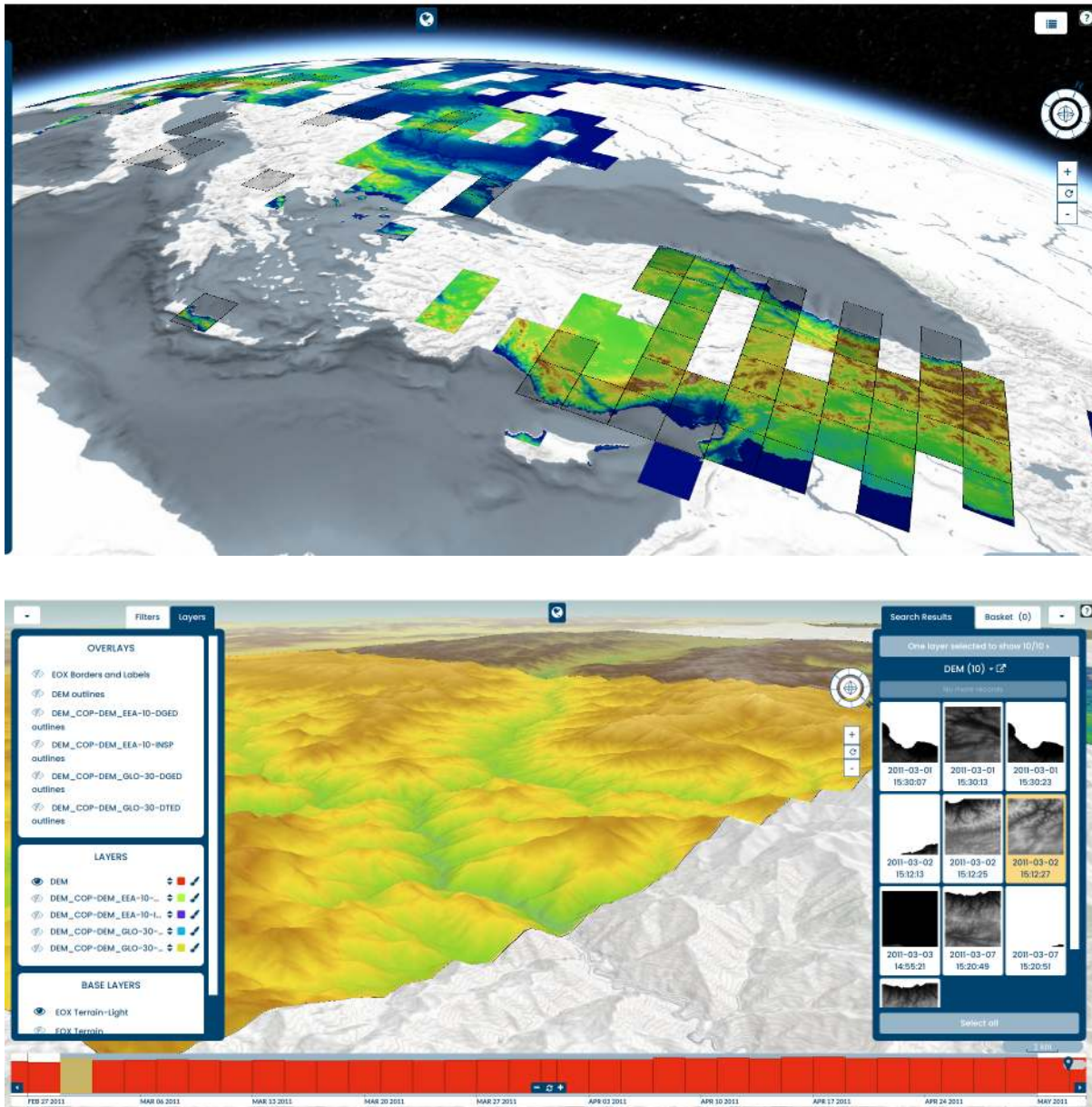


Figure 2.4.1: 3D visualization

Navigating to the area of interest is done by:

- *panning*: left click + drag or one finger drag.
- *zooming*: mouse wheel scroll, double click, two finger pinch.
- *rotating* : Middle click + drag, or by pressing CTRL button + Left/Right click + drag.

in the upper right corner of the 3D map you can find the tutorial/help button. Pressing it will open a widget for displaying instructions for navigating the globe with the mouse.

Additionally, on the upper left side of the map (right to the left panel) there are navigation buttons to zoom in/out and a reset button to reset the position, and an interactive compass to aid the user to move and re-reorientate the view.

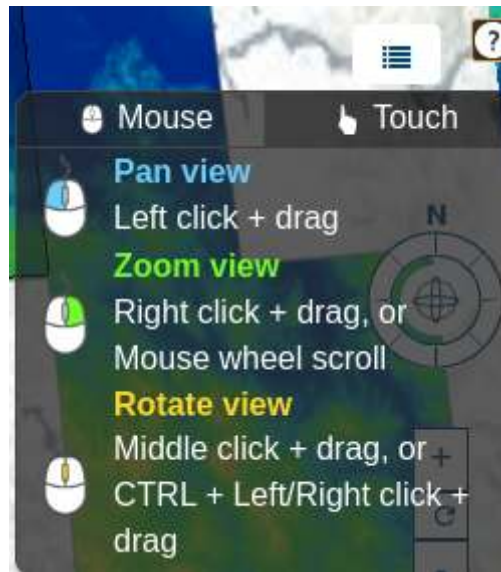


Figure 2.4.2: *Web Client Tutorial - Map*



Figure 2.4.3: *Web Client Tutorial - Map*

2.5 2D View

In 2D navigating to the area of interest is done by:

- *panning*: left click + drag or one finger drag and
- *zooming*: mouse wheel scroll, double click, two finger pinch, or the plus and minus icons in the bottom right corner of the map.



Figure 2.5.1: Web Client Tutorial - Map

While hovering over footprints on the map, the respective product(s) are highlighted in the *map*, *timeslider*, and the *Search Results* menu. The same behavior is applied vice versa while hovering over dot groups in the *timeslider* and individual items in the *Search Results*.

Clicking on a footprint in the map followed by clicking on the *plus* or *minus* button can be used to add or remove a product to or from the *basket*, holding the list of products selected for download (see [Download](#) below).

In the top most part of the map, there is a colored bar spanning the full width of the web client acting as loading indicator. It makes it easier to see if the loading of all requested map tiles is already finished or still in progress.

The geographic coordinates of the current cursor location can be seen as longitude, latitude pair in the bottom left corner of the map.

Warning: Following feature is available only for collections where a flexible WMS or WMTS rendering is configured. If WMTS is used as default access services, the WMS service must be exposed on the same endpoint. This is default setup for VS cache service. Clicking on the *landscape map* icon in the bottom right of the map window shows a list of available layers. Clicking on one of the layers opens a new browser tab showing this layer as currently visible on the map by generating a *WMS* request copying the current map parameters (zoom, bounding box, selected time, styling, etc.) in a new tab or downloading the image.



Figure 2.5.2: Web Client - 3-way highlighting



Figure 2.5.3: Web Client - Select on map

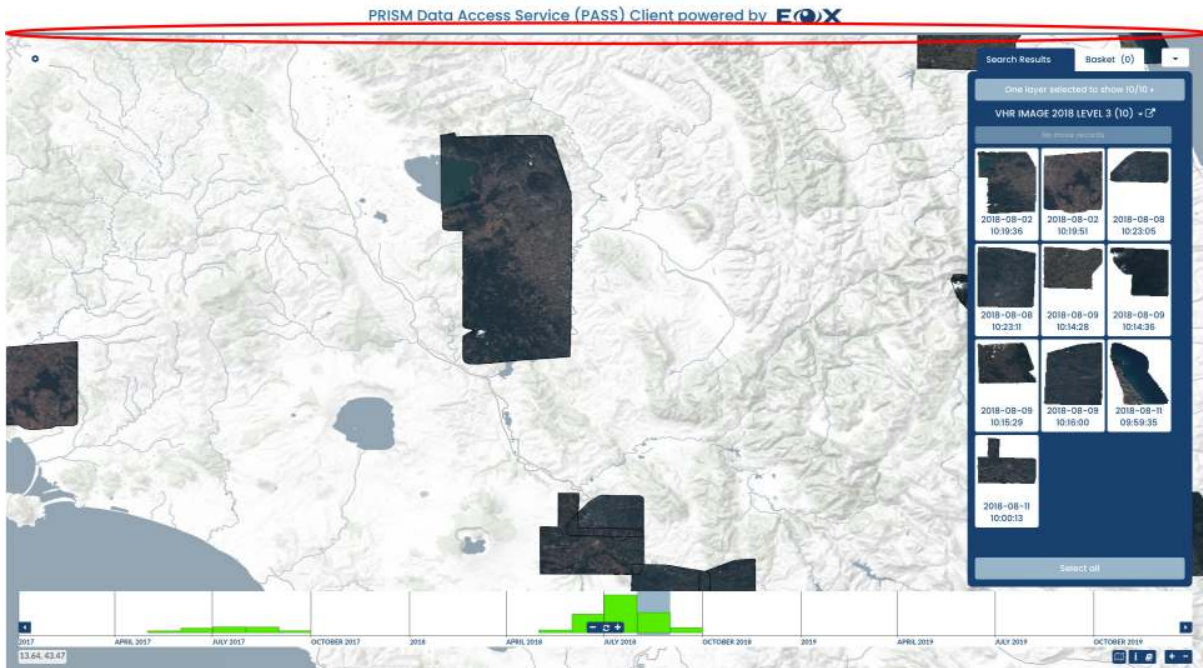


Figure 2.5.4: Web Client - Loading indicator

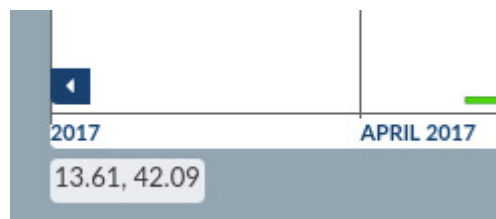


Figure 2.5.5: Web Client - Coordinates

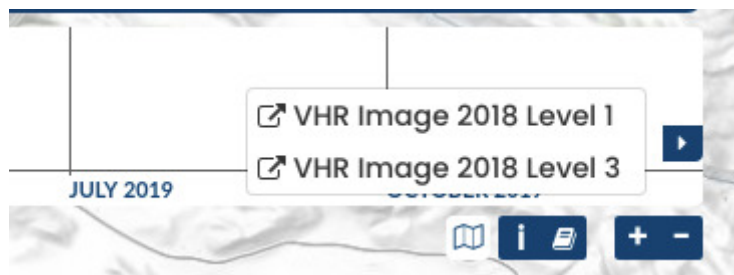


Figure 2.5.6: Web Client - Current view

2.6 Timeslider

The *timeslider* presents the distribution of products in time via a *bar* (see Figure 2.6.1) or an *aggregated dots* (see Figure 2.6.2) graph. The visualization mode used (*bars* or *dots*) is based on the total number of products available for the shown time interval.

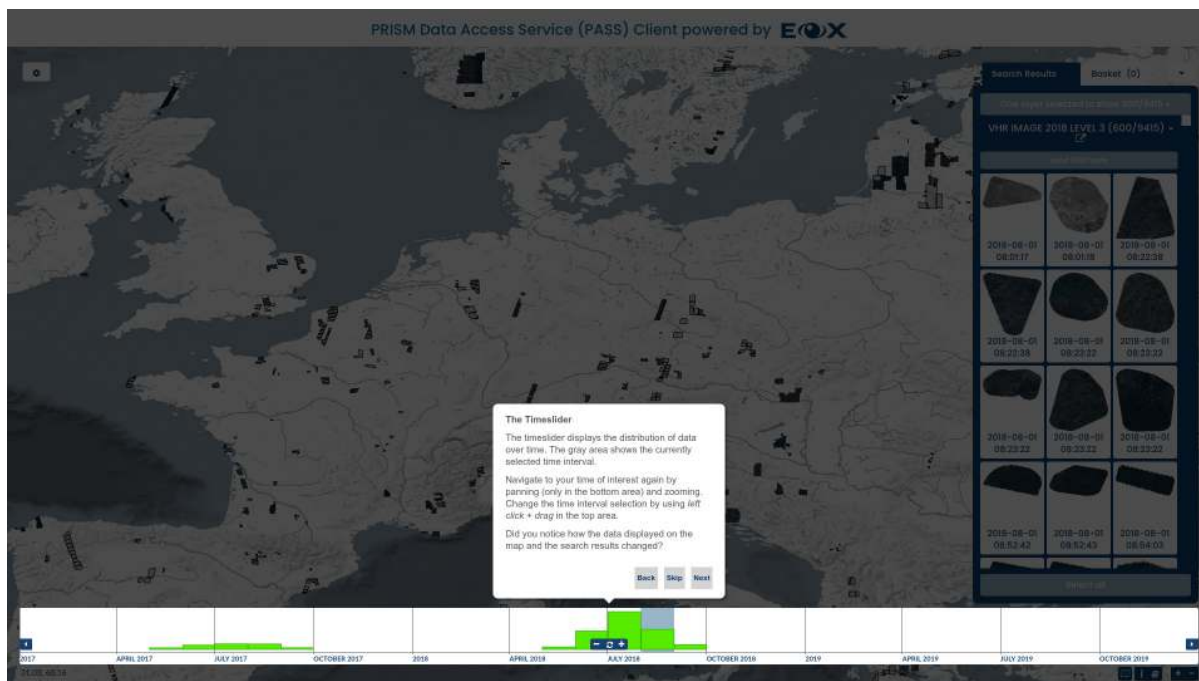


Figure 2.6.1: Web Client Tutorial - Timeslider



Figure 2.6.2: Web Client - Timeslider dots

The interactive *timeslider* can be used in the following ways:

- *panning*: left click + drag or one finger drag on the bottom area (below the horizontal line) or left and right arrow icons on the sides
- *zooming*: mouse wheel scroll, two finger pinch, or plus and minus icons in the middle
- *reloading*: spinner icon in the middle
- *selecting a time interval*: left click + drag or one finger drag in the upper area (above the horizontal line) or click on a histogram bucket
- *showing the total number of available products in a histogram bucket*: hover over the histogram bucket
- *showing the footprints of all products, the first product id, and the total number of additional products in a dot group*: hover over the dot group

- *showing start and end of the current selection*: left click + hold on selection rectangle
- *zooming the map to a combined minimum bounding box of all products in a dot group*: click on the dot group

There are currently two ways how timeslider works connected to spatial filters:

- **Spatially un-aware**: Always shows time distribution of all available products.
- **Spatially aware**: Takes currently set spatial filter (or current map view) in account when displaying histograms. That way, time distribution of products over a specific area can be evaluated.

In order to change between the modes, use the location switch in top right edge of the timeslider panel.

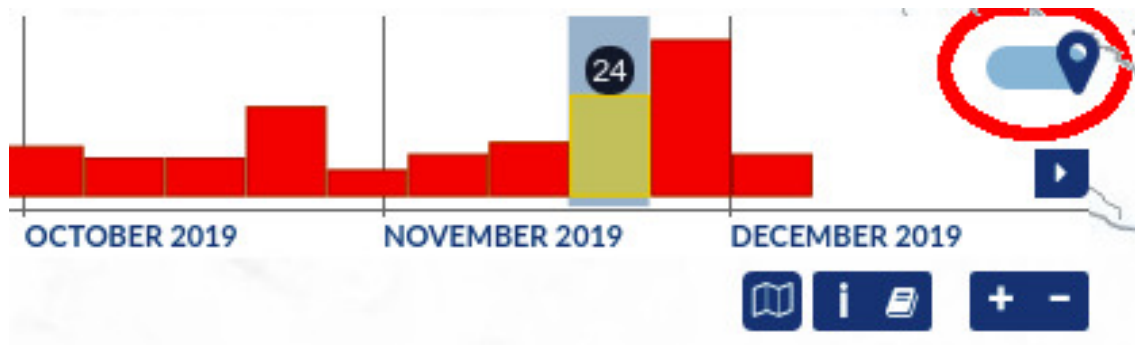


Figure 2.6.3: Web Client - Timeslider spatial toggle

2.7 Search Results

The panel in the right part of the map window has a tab showing the *Search Results* grouped by enabled layer(s). The search is defined by the currently visible geographic area or spatial filter, selected time interval, and additional filters if set. Items in the list are sorted as the catalog returns them which typically is from the oldest to the newest.

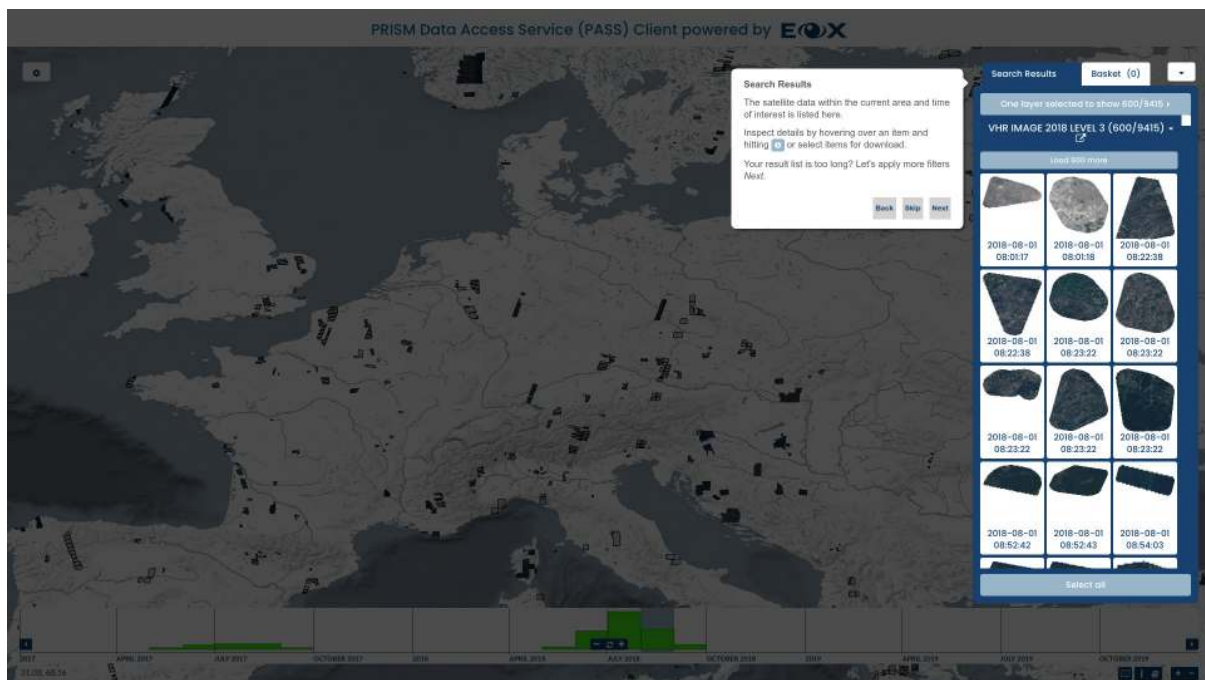


Figure 2.7.1: Web Client Tutorial - Search Results

Searching can be disabled and enabled again for each displayed layer individually by clicking on the large button labeled *N layer(s) selected to show n/n* and clicking on the corresponding layer entry (see Figure 2.7.2) or by

clicking on the *Search* toggle (see [Figure 2.7.3](#)) if only a single layer is configured.

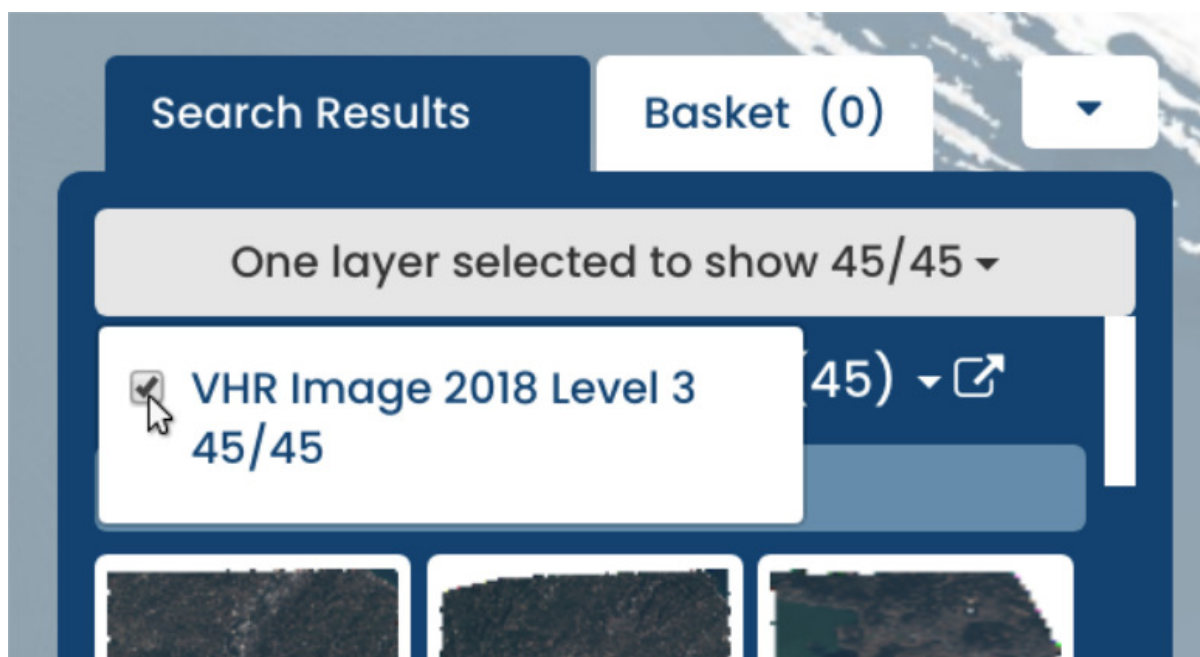


Figure 2.7.2: Web Client - Toggle search

Metadata and alternative visualizations of individual products can be inspected by hovering over an item and hitting the *info* icon either in the search results (see [Figure 2.7.4](#)) or on the map (see [Figure 2.7.5](#)). That opens a new overlay panel showing *details display* (see [Details Display](#) below).

By clicking on individual items, they can be inserted to or removed from the *basket* holding the list of items selected for download.

Searching from the web client is throttled for performance and only a limited number of items is shown from the first search. Additional items, if available, are shown by clicking the button labeled *Load n more*.

The *Select all* button adds all currently listed items to the *basket*.

The *link* button next to the layer name shows the current search query. To download the results XML file click with the right mouse button on the link and use the *Save Link As...* menu entry.

Items selected for download can be viewed in the *Basket* tab (see [Figure 2.7.8](#)) or *Selected* button (see [Figure 2.7.9](#), single layer mode) on the right panel. To remove an item from the selection use the *minus* icon visible while hovering over it.

2.8 Filters

There are several options to add explicit filters to product queries in the *Filters* tab in the left panel:

- *Spatial filter*: allows drawing a Point, Rectangle, or Polygon directly on the map. By default when no explicit spatial filter is set, the current map window extent is used as a spatial filter.
- *Time filter*: by default the time filter, a simple time interval, is configured via the *Timeslider*. If enabled, the time filter tool allows a fine grained configuration of the time interval to use for searching.
- *Additional filters*: based on the configuration provided by the operator additional filters for each layer based on available metadata like “Cloud Coverage” might be available.

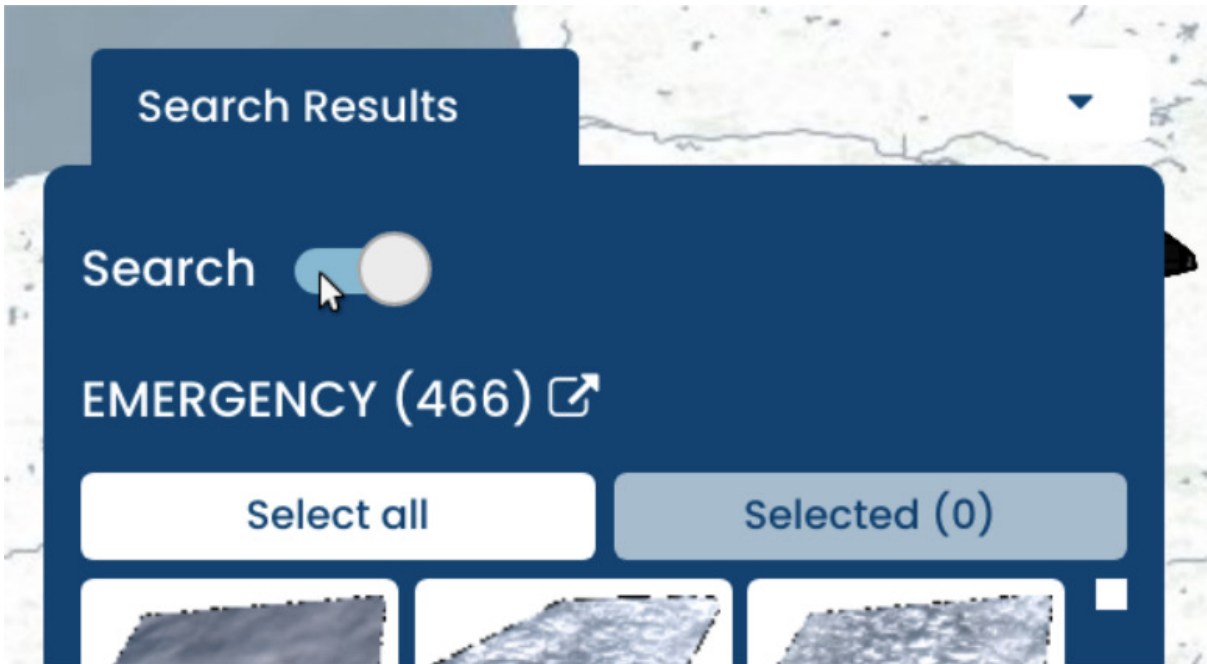


Figure 2.7.3: Web Client - Toggle search single layer

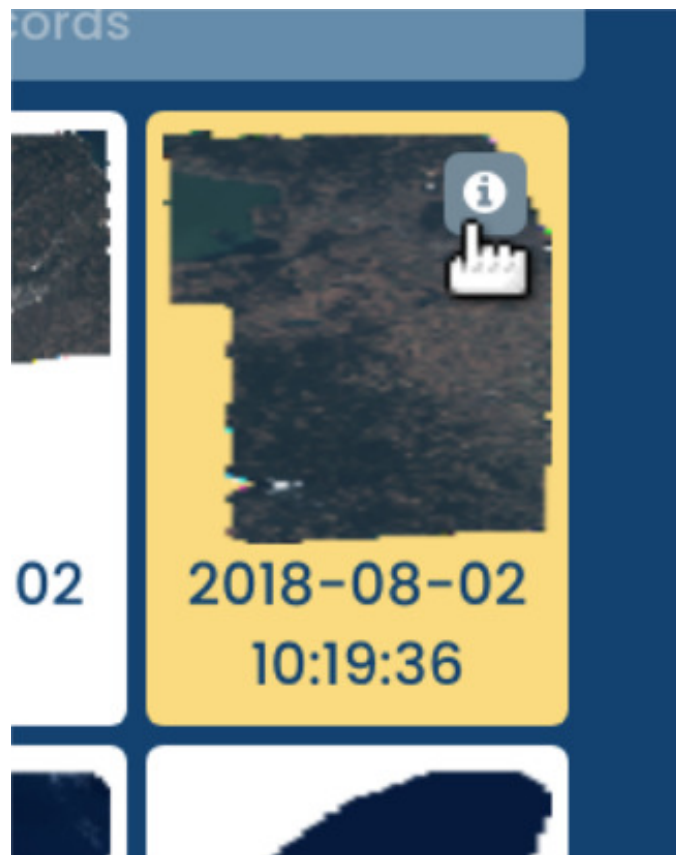


Figure 2.7.4: Web Client - Details button 1



Figure 2.7.5: Web Client - Details button 2

2.9 Map Layers

The *Layers* tab in the left panel enables configuring *Overlays*, *Layers*, and *Base Layers* to be shown.

Base Layers provide various backgrounds whereas *Overlays* contains configured overlay layers, which can be text labels or other information like footprints, full coverage mosaics (for VHR_IMAGE_2018) or any other configured overlay content to view on top of products for easier orientation on the *map*. They can be enabled and disabled individually as needed via the *eye* icon next to their name. *Base Layers* and *Overlays* can not be downloaded or searched.

Layers correspond to product collections or datasets. Searching is performed on enabled layers.

The order of *layers* can be changed by dragging the arrows next to each layer up and down. This influences the order of the rendering on the *map* as well as in the *timeslider*.

The visualization (styling) of *layers* can be changed by clicking on the *paint brush* icon next to the layer name. The displayed overlay enables setting the layer's opacity and selecting one of the predefined styles for the layer.

All three types of *layers* allow clicking on the Layer name to show an information panel with further layer metadata and additional information, together with a visualization GetCapabilities link.

2.10 Details Display

In order to view details of individual products, either click on the *info* (i) icon after clicking on the product footprint on the map or the product entry in the *Search Results* panel.

An overlay display will open showing the product metadata as well as the product itself on a map. The product metadata contains links to visualize and download the metadata and product. Those links are OGC standards compliant service requests for OpenSearch (see chapter *Searching*), WMS (see chapter *Viewing*), WCS, and DSEO (both see chapter *Downloading*). The chapter *Sample Service Requests* provides sample requests for all those services.

The following links are provided:



Figure 2.7.6: Web Client - Add item to basket



Figure 2.7.7: Web Client - Buttons in search panel

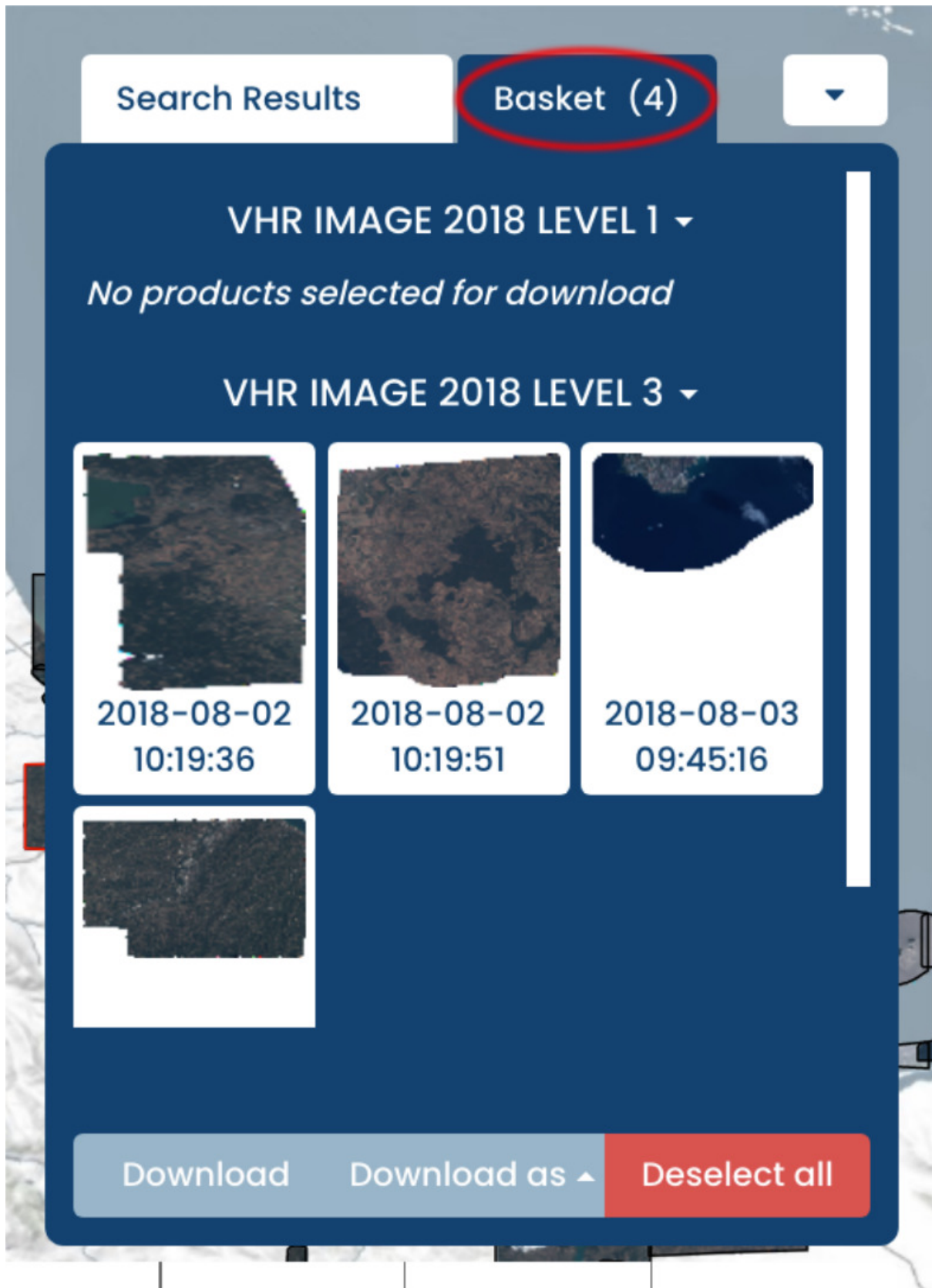


Figure 2.7.8: Web Client - Basket



Figure 2.7.9: Web Client - Selected

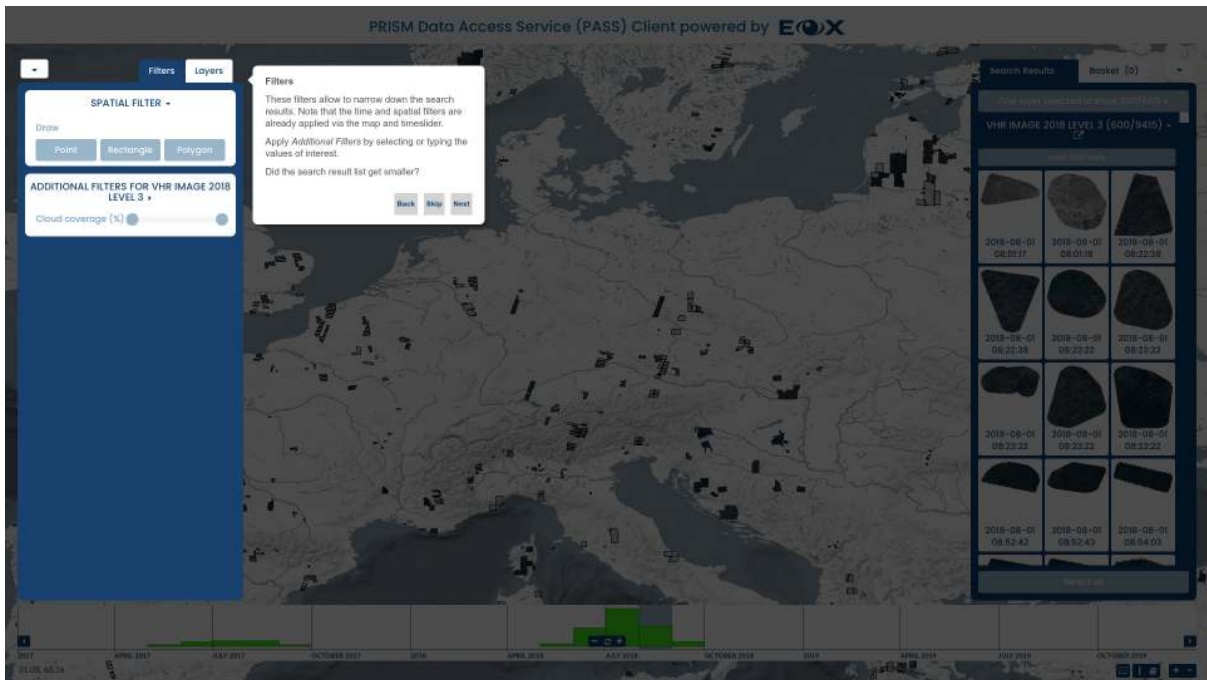


Figure 2.8.1: Web Client Tutorial - Filters

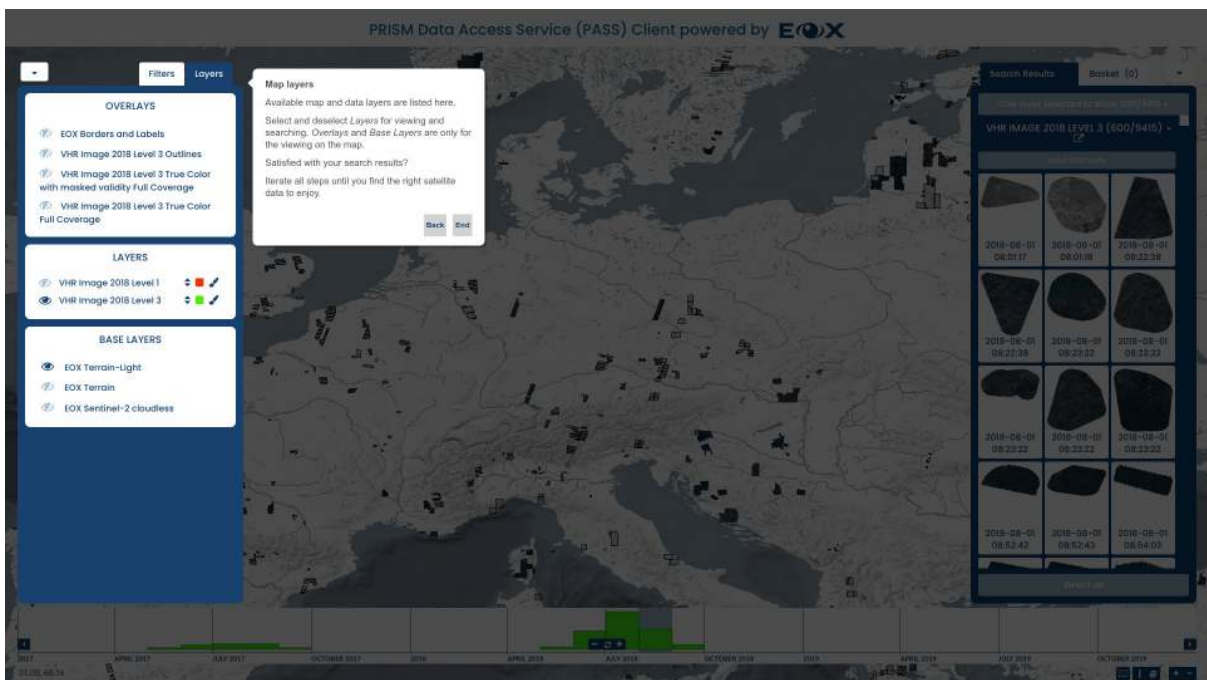


Figure 2.9.1: Web Client Tutorial - Map Layers

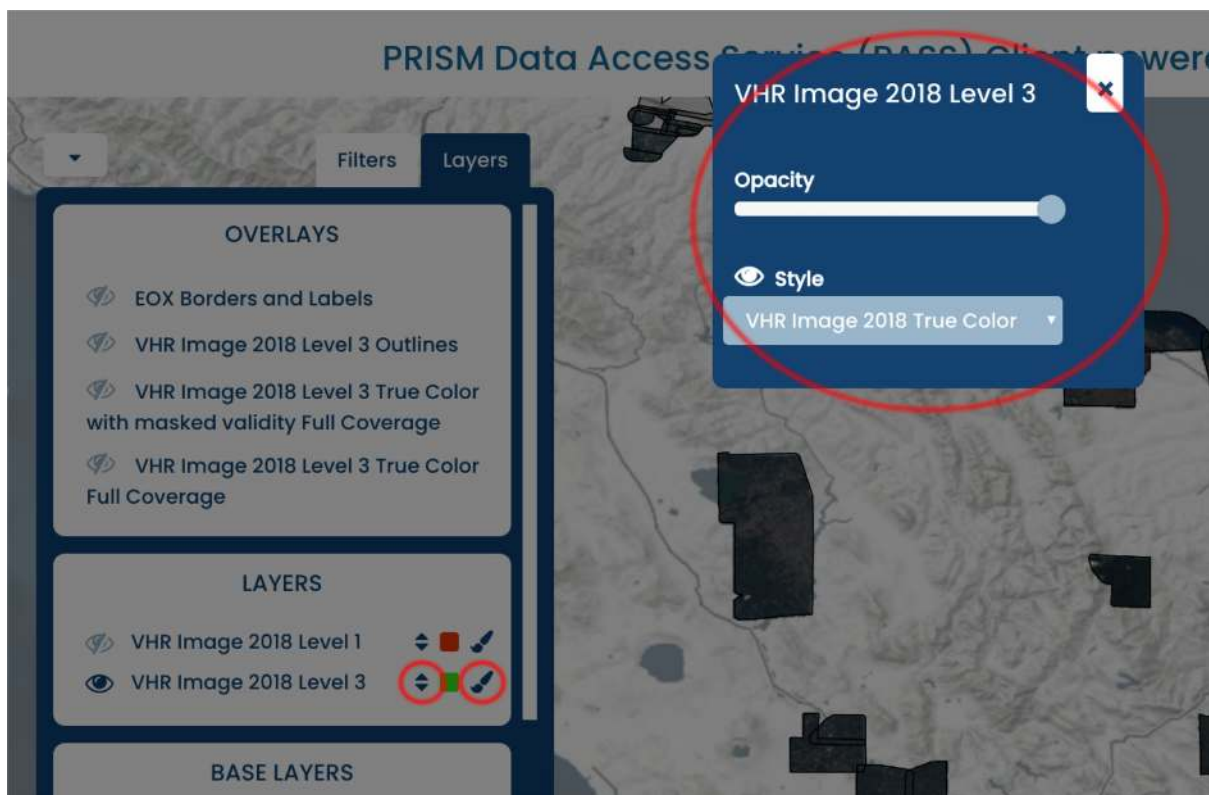


Figure 2.9.2: Web Client - Layer configuration

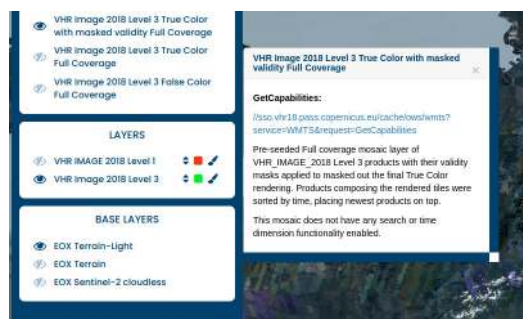


Figure 2.9.3: Web Client - Layer Description popup

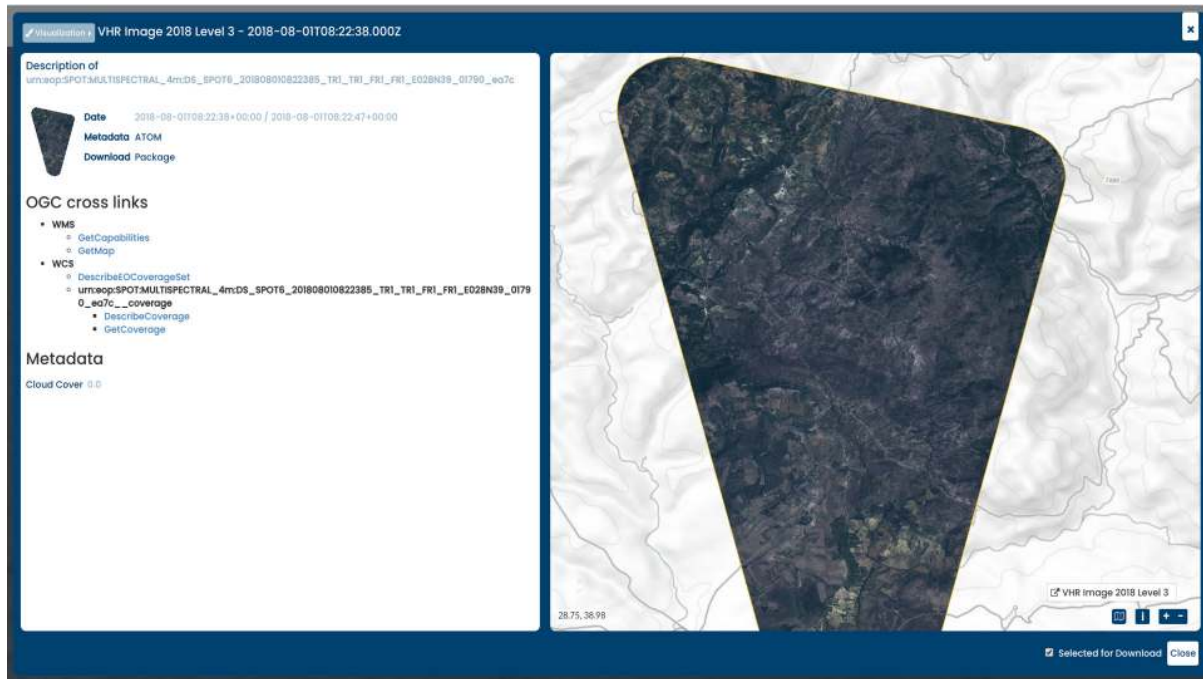


Figure 2.10.1: Web Client Details Display

- *Metadata ATOM*: download the product's metadata in ATOM format
- *Download Package*: download the entire product as stored on object storage
- *WMS: GetCapabilities*: get the description of the WMS for the individual product for example for inclusion in QGIS
- *WMS: GetMap*: visualize the individual product using WMS
- *WCS: DescribeEOCoverageSet* or *WCS: DescribeCoverage*: get the description of the product's coverage in WCS
- *WCS: GetCoverage*: download the product as coverage potentially after adjusting the URL parameters
- *WCS: GetEOCoverageSet* : download all the products within a coverage's bounding box,

The visualization of the product layer for this map window can be changed via the *Visualization* button in the top left corner.

View Server provides multiple display options, opacity, style, and DEM specific visualization options, such as: Hillshade, Slope, Aspect, Contours, Roughness and Terrain Ruggedness Index. each option has editable parameters (e.g Figure 2.10.3 algorithm, altitude, z-factor and azimuth for hillshaded relief)

The product itself can be added to the *basket* by ticking the check box in the bottom right of the panel.

2.11 Download

Several methods for downloading products or only parts of them are exploited by the web client.

After putting one or more products in the *basket* or selecting them for download, they are listed in the right panel, either on the *Search Results* tab via the *Selected* button or on the *Basket* tab (see section *Search Results* particularly Figure 2.7.8 and Figure 2.7.9 above).

To download a full product (image and linked metadata) or a full coverage (just the image), the *Details Display* of the respective product can be used (see chapter *Details Display* above).

To download all selected products in parallel or as single packaged folder the *Download* or *Download as* buttons on the right panel of the web client can be used.

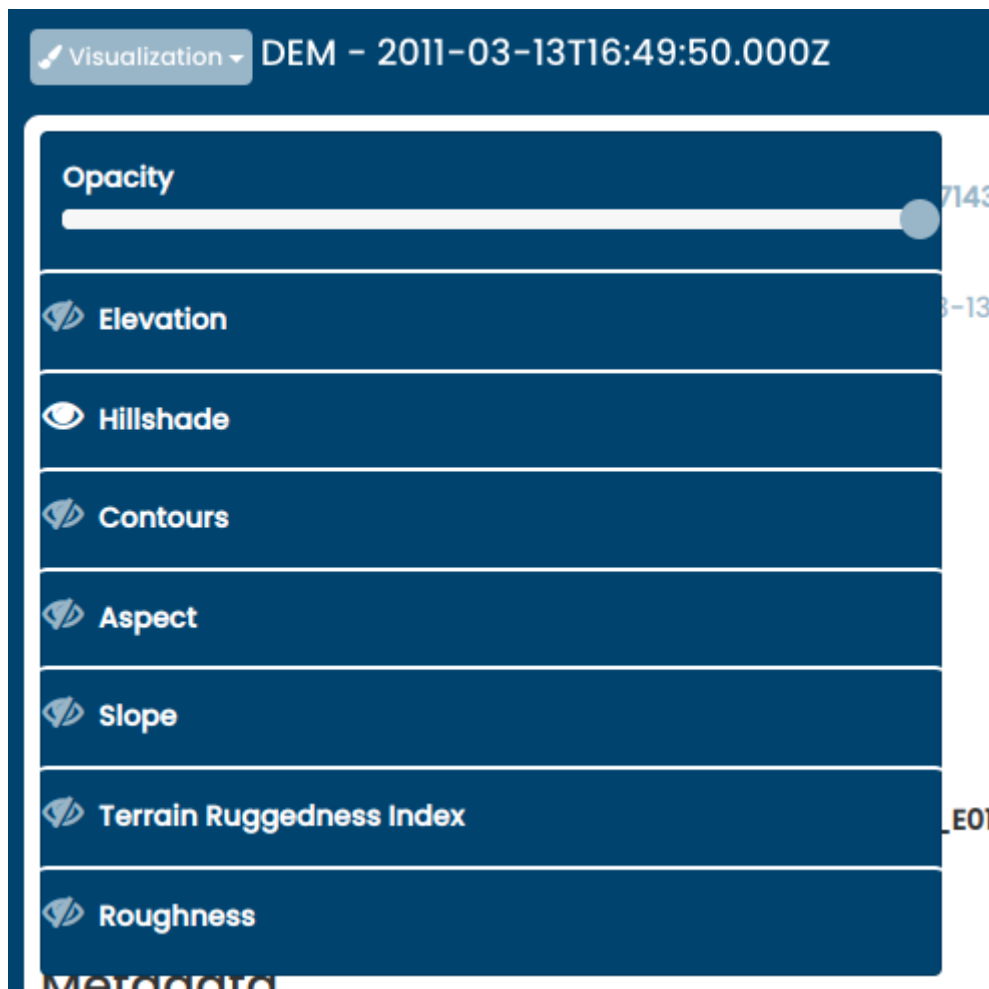


Figure 2.10.2: Web Client - Visualization options in detailed display

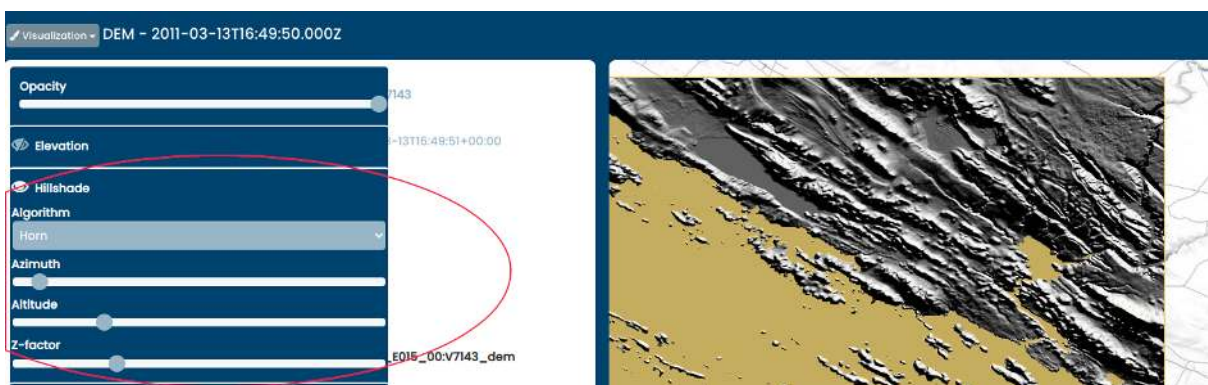


Figure 2.10.3: Web Client - Parameter Selection

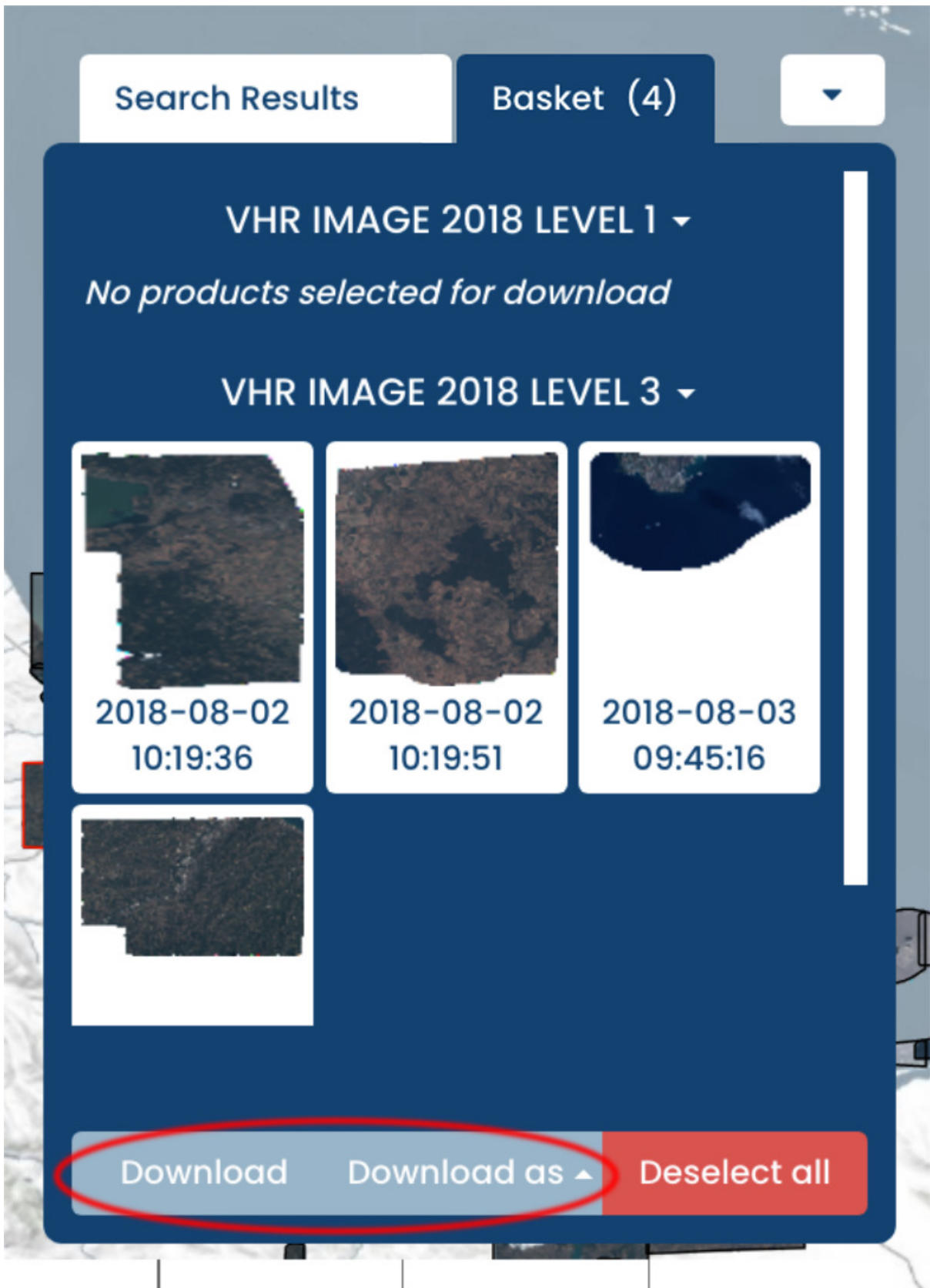


Figure 2.11.1: Web Client - Download multiple products

- *Download as*: offers a *Download as URL-List* option which downloads a .txt file with a list of download links (*Get Coverage* requests), a *Download as Metalink* option allowing for possibly increased speed via segment downloading by metalink-aware software, and -if configured- a *Start WPS processes* option which lunches a WPS interface.

Download: opens an overlay panel allowing to specify download type: whether to download multiple products in one compressed archive, or to separately download products in a parallel manner. the panel provides the ability to select download parameters for *subsetting*, *projection*, *format*, *package type* (in case of multidownload), *interpolation*, and *resolution* or *scaling* as shown in [Figure 2.11.2](#) below. When multiple products are to be downloaded, the configured options are applied to all of them. Clicking the *Download* button confirms the selected options and initiates the downloads. Note, if the products are downloaded via WCS, browser might open multiple confirmation dialogs or issue a warning. Besides, modern browsers have a limit of 6 concurrent connections. Popups might need to be explicitly allowed for this site. Usually a server-side limit on the resulting size of a downloaded image in pixels served by WCS protocol is configured in order to not completely exhaust the available resources by a single request for a very large product. If users want to use WCS protocol to download a resulting image larger than the imposed limit, they can use tiling approach by making several smaller requests by subsetting or reduce the required resolution by modifying the scale. Alternatively to download a full product (image and linked metadata) without any limits the user can use the option *Download Package* (see chapter [Details Display](#) above).

2.12 WPS Processes

The web client provides an interface for some processes, currently mainly related to DEM collection, each process's settings (such as inputs, outputs...etc) are defined in the client configuration file. Currently, the following processes are provided:

- **Height Profile**: (DEM) Creates a height profile of a line crossing a DEM tile. provided as PNG, Jpeg, tiff and csv.
- **Hillshade Relief**: (DEM) Creates a height profile of a line crossing a DEM tile. provided as PNG, Jpeg, and tiff.
- **Aspect**: (DEM) Creates *Aspect* which is the orientation of slope of a DEM tile. provided as PNG, Jpeg, and tiff.
- **Slope**: (DEM) Creates a *Slope* which is the steepness or the degree of incline of a DEM tile surface. provided as PNG, Jpeg, and tiff.
- **Contours**: Creates contours of a DEM a tile.. provided as PNG, Jpeg, and tiff.
- **Statistics**: (all collections) Get statistics for all coverage/s that intersects with the input bounding box.

The interface allows users to select the process they intend to execute. (for example the height profile process shown in [Figure 2.12.1](#) below) Once selected, users get to specify process's parameters (e.g bbox/line, output format... etc) either as values they insert or selection, spatial values (bbox, line) can also be drawn in the map.

The processes interface enables users to navigate between selected products using the next & previous buttons in the upper left corner of the panel (figure [Figure 2.12.2](#))

Once all parameters are selected/inserted, clicking the *Start Processing* button in the lower right corner (see figure [Figure 2.12.3](#))

Will send the WPS execute request to the vs renderer to execute the process.

Start download of one product ✕

Download Method Download multiple files with GetEOCoverageSet

Bounding Box Use bounding box of current spatial filter to crop

35.1441	37.4007	42.4936	40.9323	Draw Bounding Box
---------	---------	---------	---------	-------------------

Projection WGS-84 ▾

Package ZIP ▾

Format TIFF ▾

Interpolation Bilinear ▾

Scaling

Full size

Resolution (in decimal degrees)

Resolution X	-	Resolution Y
--------------	---	--------------

Scale (Of total size)

100	%
-----	---

'Download' starts the download of 4 products

Note, the browser might open multiple confirmation dialogs or issue a warning. Besides, typically browsers have a limit of 6 concurrent connections. If popups are blocked by your browser, please enable them for this site.

Close Download

Figure 2.11.2: Web Client - Download multiple products via WCS

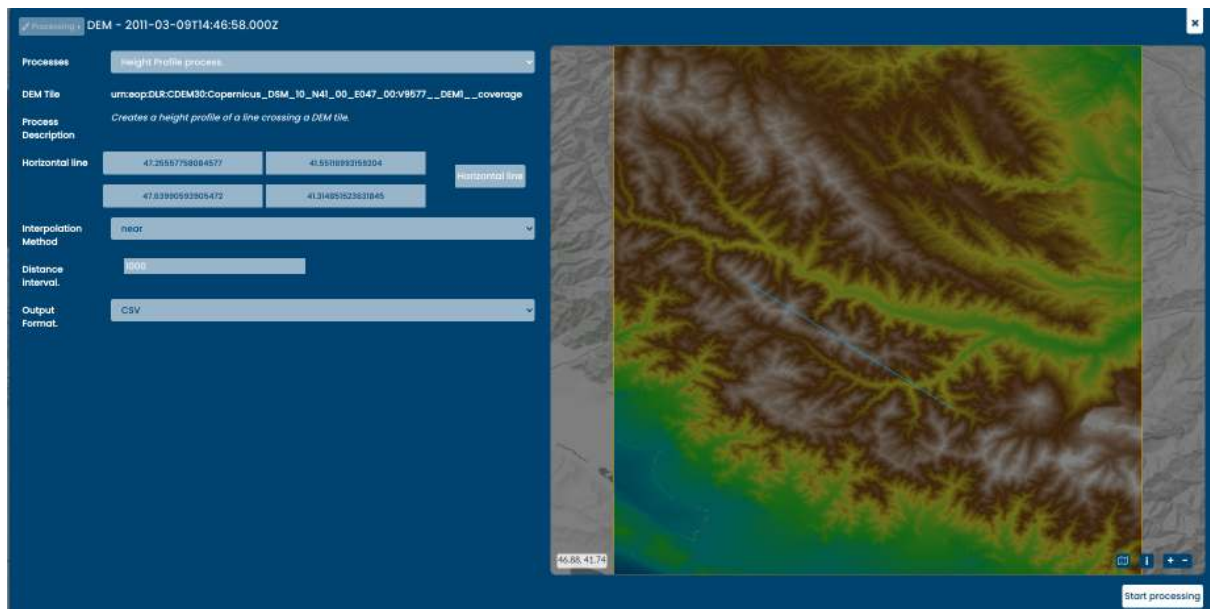


Figure 2.12.1: Web Client - Get height process of a selected DEM tile

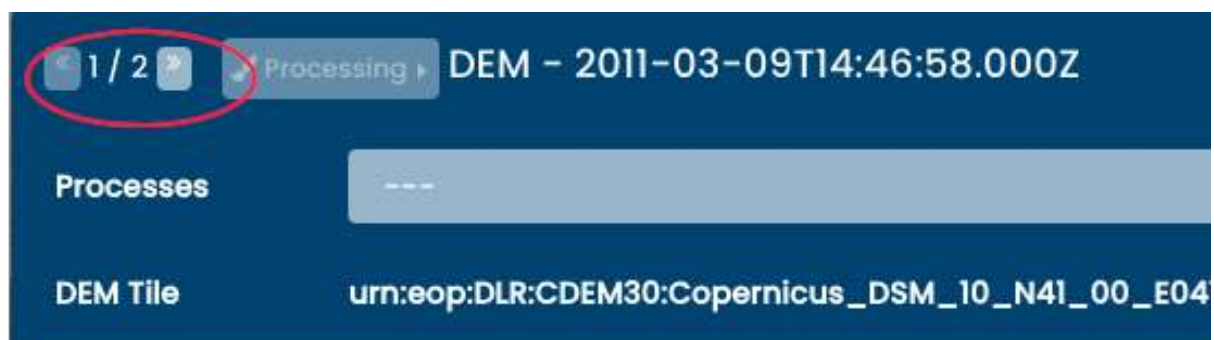


Figure 2.12.2: Web Client - Navigate through products

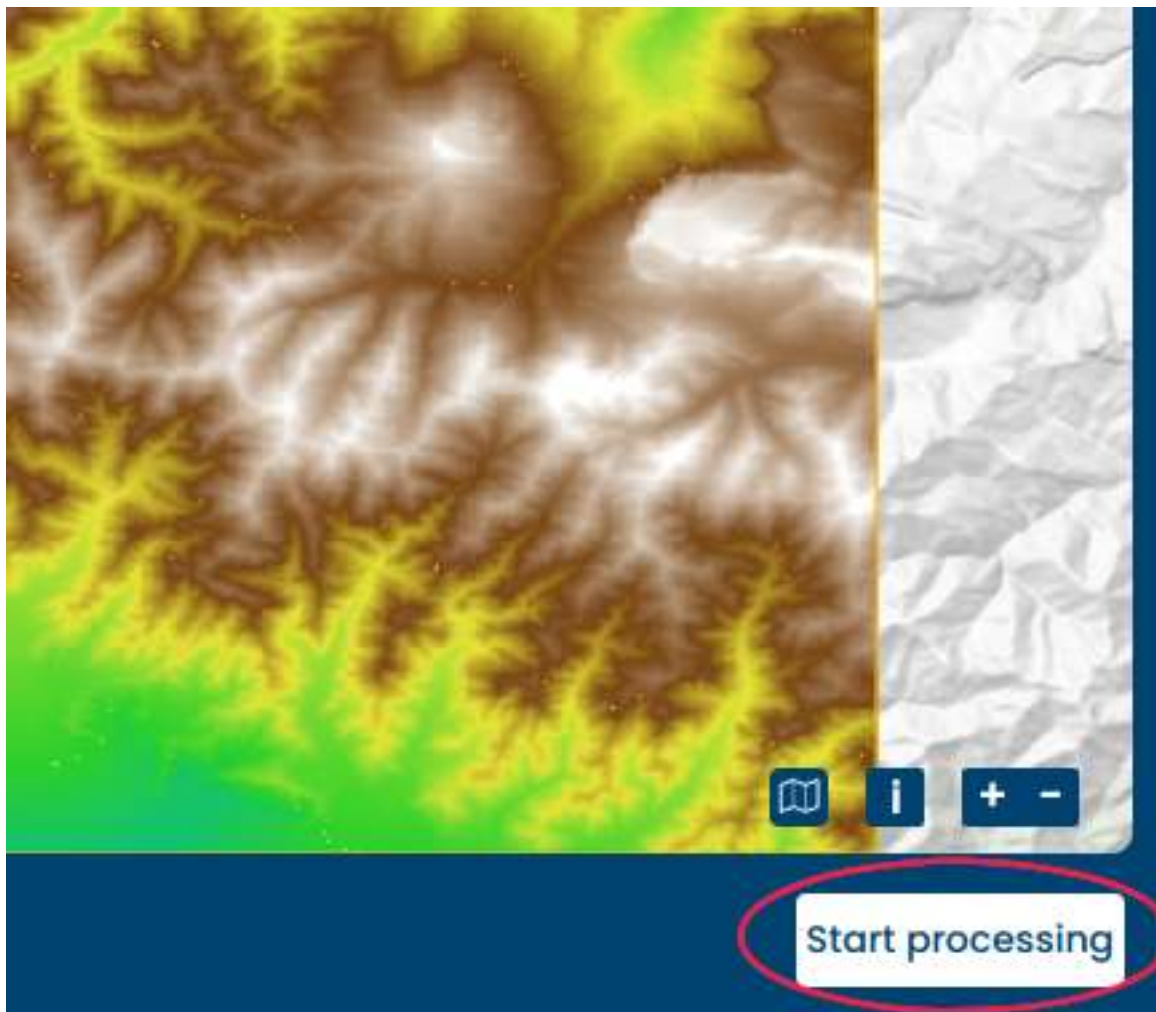


Figure 2.12.3: *Web Client - start processing*

2.13 Saving the session

The web client allows to save some parts of its current state by setting the URL search parameters. That enables users to revisit the same view in time and space later on or share the direct link with someone, overruling the default client setup. Please note that certain characters are automatically URL encoded, as URLs sent over the Internet only use the ASCII character set. This means that if user manually enters for example : sign, while entering the website, it will automatically transform into %3A, making the URL less readable.

- Pre-set the map position by setting **x**, **y** as coordinates of the center of the map and the zoom with the **z** parameter. [Map position example](#).
- The time selection is set by *timestart* and *timeend*, and should be entered as ISO 8601 UTC time format without milliseconds. [Time selection example](#).

The following chapters describe the services offered for *Viewing*, *Searching*, as well as *Downloading*.

SEARCHING

The main interface for searching is provided by [OpenSearch](#) using various extensions including the [Geo and Time Extensions](#), the [Extension for Earth Observation](#) as well as the [CEOS OpenSearch Best Practice Document](#).

The OpenSearch URL endpoints are:

- `/opensearch`: Main service description
- `/opensearch/<format>`: Search for collections in a specific format
- `/opensearch/collections/<collection-id>`: Collection specific description
- `/opensearch/collections/<collection-id>/<format>`: Search for products in a collection in that format

3.1 Responses

The description related endpoints provide an OpenSearch Description Document (OSDD). This XML based file format describes general service metadata and various access URL templates.

These URL objects provide templates that can be filled with parameters to submit actual metadata queries. Depending on the used URL, the search result is returned in one of the following formats:

- `atom`: Atom syndication format
- `rss`: RSS
- `html`: HTML
- `kml`: Keyhole Markup Language
- `json`: GeoJSON

The resulting items in that result document can be paged. Specific pages can be retrieved using the `offset` and `count` parameters. Additionally, the response contains links to the first, last, next, and previous pages of the result set.

The results of the search depend on the type of object being searched. For the collection search, the result items are collection descriptions of all matched collections encoded in the selected format. Each description contains a link to its own specific OSDD document.

In product searches, the result document items are descriptions of products, containing links to thumbnails, browses, and product specific services such as WMS or WCS. Additionally it contains the products acquisition footprint and time stamp.

3.2 Filters

The URL templates for both the collection and the record search allow to pass parameters that control the query and shape of the search. The following table shows all parameters available for both collection and product searches:

Parameter	Description
startIndex	The index offset of the items. Used to get subsets of a result set
count	The number of records for each page
start	The start time stamp for the time range
end	The end time stamp for the time range
timeRel	The semantic of the time range. Either <code>intersects</code> , <code>contains</code> , <code>disjoint</code> , or <code>equals</code>
bbox	The geographic bounding box expressed as <code>min-lon, min-lat, max-lon, max-lat</code> in WGS84 coordinates
geom	A WKT encoded geometry for a geographic search
lon	The longitude component of point/radius searches
lat	The latitude component of point/radius searches
r	The radius in metres of point/radius searches
geomRel	The semantic of the geometry filter. One of <code>intersects</code> , <code>contains</code> , or <code>disjoint</code>

The following parameters are only available in product searches in addition to the general search parameters:

Parameter	Description
uid	Filter on identifier
cloudCover	Cloud cover filter. Either a specific value or an interval of values. Values between 0-100

The available parameters depend on the configuration made by the operator.

Samples responses for each of the four URL endpoints are provided in the *DEM collections* section of the *Sample Service Requests* chapter.

Continue reading about the provided *Downloading* services.

VIEWING

The viewing interface is implemented following the [Web Map Tile Service \(WMTS\)](#) as well as the [Web Map Service \(WMS\)](#) standards. Both services are implemented by a wide range of client software which makes it as simple as possible to integrate the viewing service as needed.

Service endpoints optimized for performance as well as for flexibility are provided alongside each other. Concrete example URLs demonstrating the capabilities of the various endpoints are provided in the chapter [Sample Service Requests](#).

4.1 Performance optimized service

The performance optimized service variant is provided under the path `/cache/ows`.

This endpoint offers access to predefined visualizations via WMTS and WMS. The GetTile as well as GetMap requests are answered from image tiles cached on object storage when possible. [Figure 4.1.1](#) below shows the three predefined visualizations, true color, false color, and NDVI of the same image tile and [Figure 4.1.2](#) the unmasked and masked versions using the validity mask of one tile.

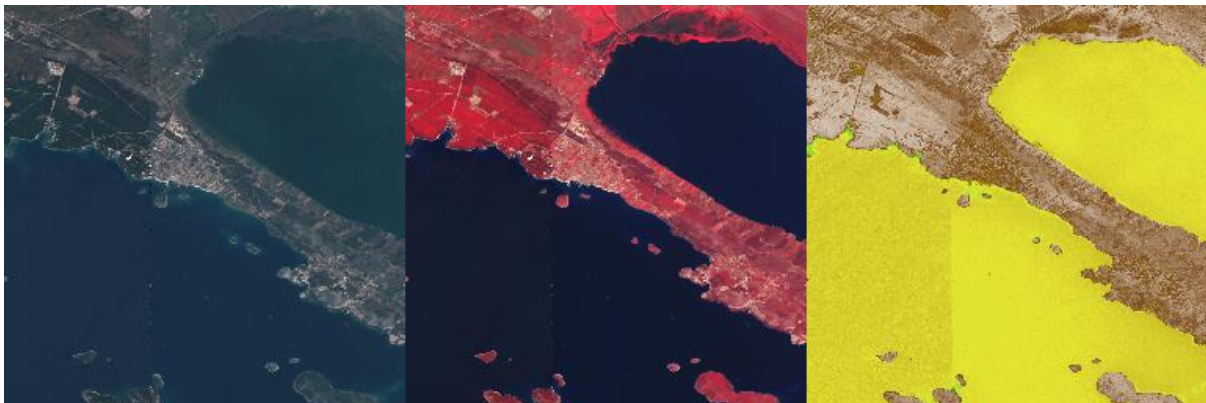


Figure 4.1.1: *WMTS Tiles - True color, false color, and NDVI*

The operator might configure additional layers besides the default ones. These layers can offer a specific customization described below as performance optimized variant.

For example for the VHR Image 2018 dataset not only the three default layers for True Color, False Color, and NDVI are configured but also the Masked Validity one as shown in the figures above.

In addition the VHR Image 2018 dataset contains level 1 and 3 products. Thus individual layers aggregating each level individually are added making the total of offered layers twelve.

Finally two layers are configured offering a quick true color visualization of the entire level 3 datasets without support of the time dimension both unmasked as well as masked. The masked layer is shown in [Figure 4.1.3](#) below.



Figure 4.1.2: *WMTS Tiles - Unmasked and masked*



Figure 4.1.3: *Web Client - Full coverage layer*

Image tiles not yet present in the cache are stored upon first hit for consecutive requests. This is the so-called on-demand caching. The operator might decide for optimal performance, even for the first request, to pre-seed the cache. Also a mixed variant with a partly pre-seeded cache for example up to a certain zoom level is possible.

However, this is done fully transparent to the users and the only impact is that they might need to wait slightly longer when they are the first to visualize a certain product.

This service offers access on collection level only. Individual products can be addressed using the `time` parameter given that they do not cover one another on the time axis.

The best performance is offered at the WMTS interface which serves image tiles as they are cached without the need of any reprocessing. WMS responses are generated on-the-fly from image tiles and might thus need some reprocessing to stitch together and scale image tiles.

Cache WMS endpoint usually configures a maximum pixel size of the resulting rendered image.

More sophisticated reprocessing like reprojection or custom color adjustments are not offered at this endpoint.

4.2 Flexible service

The other service variant offered is optimized for the best possible flexibility and can be accessed at the path `/ows?`. There are no server limits imposed on the pixel size of the rendered images on the flexible endpoint.

This endpoint offers the following customizations via WMS:

- Access to individual products via ID (`cql=identifier='ID'`)
- Access to entire collections/datasets supporting `time` parameter
- Various layers as defined by the [Earth Observation Application Profile of WMS \(EO-WMS\)](#) like one showing outlines of products (`__outlines`)
- Additional useful layers like one showing both, products and outlines, correctly rendering topology of outlines (`__outlined`) or one showing a validity mask (`__validity`) or applied validity mask (`__masked_validity`)
- Numerous styles for layer where feasible like outlines or NDVI (`layers=ID__NDVI&STYLES=coolwarm`)
- Reprojection to operator configured coordinate reference systems
- Color adjustment via custom linear stretch `dim_range=<low-red-or-grey> <high-red-or-grey>[, <low-green> <high-green>, <low-blue> <high-blue>]`
- Filtering of products to render into collection/dataset visualizations via Common Query Language (CQL) for example `&cql=cloudCover<1`
- All other standard WMS parameters like `transparent`, `format`, etc.
- Eligible products (vhr15/ua2012 and some Emergency products) when configured allow special rendering `TRUE_COLOR_PANSHARPENED` to perform on-the-fly pansharpener.
- Specifying rendering variables via vendor WMS parameter like in case of `DEM__hillshade` rendering: `VARIABLES=alg=ZevenbergenThorne,azimuth=315,altitude=45,zfactor=1`.

All these customization parameters can of course be combined as needed.

Please see the chapter [Sample Service Requests](#) for detailed examples of all supported parameters.

Continue reading to learn about the provided [Searching](#) services.

DOWNLOADING

The download interface is implemented following the [Web Coverage Service \(WCS\)](#) as well as the [Download Service for Earth Observation Products Best Practice \(DSEO\)](#) standards.

These interfaces support both, the simple download of entire products via DSEO as well as flexible customized downloads via WCS. Both services can be accessed at the path `/ows?`.

The WCS offers the following customizations in order to optimize downloads and minimize unnecessarily used bandwidth:

- [Earth Observation Application Profile \(EO-WCS\)](#)
- Meaningful default configuration
- Spatial subset to retrieve only the geographic area of interest
- Range subset to retrieve only the band(s) of interest
- Scaling to required resolution
- Format selection
- Interpolation selection if needed
- Projection selection

Note that the download size in WCS is restricted in order to not block the service. Clients are advised to download bigger coverages in chunks and put them together afterwards.

Another method of downloading the data is via a service proxying requests to the readily available COGs on object storage. The service supports HTTP range requests in order to allow clients to optimally exploit the capabilities of COGs and is reachable on endpoint `/http/storage`

The final chapter [Sample Service Requests](#) holds a list of sample requests against the various services described in this user guide.

SAMPLE SERVICE REQUESTS

This chapter provides various sample requests. Those requests are against a operational service but still might get obsolete over time. If that is the case, please [let us know](#):

For more information about used authentication and authorization for the purposes of trying out the sample requests yourselves, please have a look at [Authentication](#).

6.1 Web Client

The web and services are accessible on the production URL:

- `sso.<collection>.pass.copernicus.eu`

Currently as of writing these collections/datasets are available:

- VHR IMAGE 2018: <https://sso.vhr18.pass.copernicus.eu>
- Emergency <https://sso.emg.pass.copernicus.eu>
- Copernicus DEM Open <https://sso.demf.pass.copernicus.eu>
- Copernicus DEM Restricted <https://sso.dem.pass.copernicus.eu>
- Frontex Emergency <https://sso.frtx-emg.pass.copernicus.eu>
- SatCen Emergency <https://sso.sace-emg.pass.copernicus.eu>
- Csea Emergency <https://sso.csea-emg.pass.copernicus.eu>
- VHR IMAGE 2015 <https://sso.vhr15.pass.copernicus.eu>
- VHR1-2 Urban Atlas 2012 <https://sso.ua2012.pass.copernicus.eu>
- DWH_MG2_CORE_01 - Optical HR Pan EU Coverages (Image2012) <https://sso.core12.pass.copernicus.eu>
- DWH_MG2_CORE_02 - Optical HR Pan EU coverages (Image2006 and Image2009) <https://sso.core09.pass.copernicus.eu>

Some examples of available requests follow.

6.2 Performance optimized viewing

WMTS Capabilities

```
<?xml version="1.0" encoding="UTF-8"?>
<Capabilities version="1.0.0" xmlns="http://www.opengis.net/wmts/1.0" xmlns:gml=
↵ "http://www.opengis.net/gml" xmlns:inspire_common="http://inspire.ec.europa.eu/
↵ schemas/common/1.0" xmlns:inspire_vs="http://inspire.ec.europa.eu/schemas/inspire_
↵ vs_ows11/1.0" xmlns:ows="http://www.opengis.net/ows/1.1" xmlns:xlink="http://www.w3.
↵ org/1999/xlink" xmlns:xsi="http://www.w3.org/2001/XMLSchema-instance" >
```

(continues on next page)

(continued from previous page)

```

↪xsi:schemaLocation="http://www.opengis.net/wmts/1.0 http://schemas.opengis.net/wmts/
↪1.0/wmtsGetCapabilities_response.xsd http://inspire.ec.europa.eu/schemas/inspire_vs_
↪ows11/1.0 http://inspire.ec.europa.eu/schemas/inspire_vs_ows11/1.0/inspire_vs_ows_
↪11.xsd">
<ows:ServiceIdentification>
  <ows:Title>PRISM Data Access Service (PASS) developed by EOX</ows:Title>
  <ows:Abstract>PRISM Data Access Service (PASS) developed by EOX</ows:Abstract>
  <ows:Keywords>
    <ows:Keyword>view service</ows:Keyword>
  </ows:Keywords>
  <ows:ServiceType>OGC WMTS</ows:ServiceType>
  <ows:ServiceTypeVersion>1.0.0</ows:ServiceTypeVersion>
  <ows:Fees>UNKNOWN</ows:Fees>
  <ows:AccessConstraints>UNKNOWN</ows:AccessConstraints>
</ows:ServiceIdentification>
<ows:ServiceProvider>
  <stripped/>
</ows:ServiceProvider>
<ows:OperationsMetadata>
  <ows:Operation name="GetCapabilities">
    <ows:DCP>
      <ows:HTTP>
        <ows:Get xlink:href="https://sso.vhr18.pass.copernicus.eu/cache/ows/wmts?">
          <ows:Constraint name="GetEncoding">
            <ows:AllowedValues>
              <ows:Value>KVP</ows:Value>
            </ows:AllowedValues>
          </ows:Constraint>
        </ows:Get>
      </ows:HTTP>
    </ows:DCP>
  </ows:Operation>
  <ows:Operation name="GetTile">
    <ows:DCP>
      <ows:HTTP>
        <ows:Get xlink:href="https://sso.vhr18.pass.copernicus.eu/cache/ows/wmts?">
          <ows:Constraint name="GetEncoding">
            <ows:AllowedValues>
              <ows:Value>KVP</ows:Value>
            </ows:AllowedValues>
          </ows:Constraint>
        </ows:Get>
      </ows:HTTP>
    </ows:DCP>
  </ows:Operation>
  <ows:Operation name="GetFeatureInfo">
    <ows:DCP>
      <ows:HTTP>
        <ows:Get xlink:href="https://sso.vhr18.pass.copernicus.eu/cache/ows/wmts?">
          <ows:Constraint name="GetEncoding">
            <ows:AllowedValues>
              <ows:Value>KVP</ows:Value>
            </ows:AllowedValues>
          </ows:Constraint>
        </ows:Get>
      </ows:HTTP>
    </ows:DCP>
  </ows:Operation>
</ows:OperationsMetadata>

```

(continues on next page)

(continued from previous page)

```

</ows:DCP>
</ows:Operation>
<inspire_vs:ExtendedCapabilities>
  <inspire_common:MetadataUrl xsi:type="inspire_common:resourceLocatorType">
    <inspire_common:URL>TBD</inspire_common:URL>
    <inspire_common:MediaType>application/vnd.iso.19139+xml</inspire_
↪common:MediaType>
  </inspire_common:MetadataUrl>
  <inspire_common:SupportedLanguages>
    <inspire_common:DefaultLanguage>
      <inspire_common:Language>eng</inspire_common:Language>
    </inspire_common:DefaultLanguage>
  </inspire_common:SupportedLanguages>
  <inspire_common:ResponseLanguage>
    <inspire_common:Language>eng</inspire_common:Language>
  </inspire_common:ResponseLanguage>
</inspire_vs:ExtendedCapabilities>
</ows:OperationsMetadata>
<Contents>
  <Layer>
    <ows:Title>VHR Image 2018 Level 3 True Color with masked validity</ows:Title>
    <ows:Abstract>VHR Image 2018 Level 3 True Color with masked validity</
↪ows:Abstract>
    <ows:WGS84BoundingBox>
      <ows:LowerCorner>-180.000000 -90.000000</ows:LowerCorner>
      <ows:UpperCorner>180.000000 90.000000</ows:UpperCorner>
    </ows:WGS84BoundingBox>
    <ows:Identifier>VHR_IMAGE_2018_Level_3__masked_validity</ows:Identifier>
    <Style isDefault="true">
      <ows:Identifier>default</ows:Identifier>
    </Style>
    <Format>image/unknown</Format>
    <Dimension>
      <ows:Identifier>time</ows:Identifier>
      <Default>2017/2019</Default>
      <Value>2017-05-01T09:54:28Z/2019-10-06T07:03:34Z</Value>
    </Dimension>
    <TileMatrixSetLink>
      <TileMatrixSet>WGS84</TileMatrixSet>
    </TileMatrixSetLink>
    <ResourceURL format="image/unknown" resourceType="tile" template="https://sso.
↪vhr18.pass.copernicus.eu/cache/ows/wmts/1.0.0/VHR_IMAGE_2018_Level_3__masked_
↪validity/default/{time}/{TileMatrixSet}/{TileMatrix}/{TileRow}/{TileCol}.xxx"/>
  </Layer>
  <Layer>
    <ows:Title>VHR Image 2018 Level 3 True Color with masked validity Full Coverage
↪</ows:Title>
    <ows:Abstract>VHR Image 2018 Level 3 True Color with masked validity Full_
↪Coverage</ows:Abstract>
    <ows:WGS84BoundingBox>
      <ows:LowerCorner>-24.700000 27.500000</ows:LowerCorner>
      <ows:UpperCorner>45.000000 71.300000</ows:UpperCorner>
    </ows:WGS84BoundingBox>
    <ows:Identifier>VHR_IMAGE_2018_Level_3__masked_validity__Full</ows:Identifier>
    <Style isDefault="true">
      <ows:Identifier>default</ows:Identifier>

```

(continues on next page)

```

</Style>
<Format>image/unknown</Format>
<TileMatrixSetLink>
  <TileMatrixSet>WGS84</TileMatrixSet>
</TileMatrixSetLink>
<ResourceURL format="image/unknown" resourceType="tile" template="https://sso.
→vhr18.pass.copernicus.eu/cache/ows/wmts/1.0.0/VHR_IMAGE_2018_Level_3__masked_
→validity__Full/default/{TileMatrixSet}/{TileMatrix}/{TileRow}/{TileCol}.xxx"/>
</Layer>
<stripped_12_layers/>
<TileMatrixSet>
  <stripped/>
</TileMatrixSet>
</Contents>
</Capabilities>

```

WMS Capabilities

```

<?xml version="1.0" encoding="UTF-8" standalone="no" ?>
<!DOCTYPE WMT_MS_Capabilities
  SYSTEM 'http://schemas.opengis.net/wms/1.1.0/capabilities_1_1_0.dtd' [ <!ELEMENT_
→VendorSpecificCapabilities EMPTY]>
<WMT_MS_Capabilities version="1.1.1">
  <Service>
    <Name>OGC:WMS</Name>
    <Title>PRISM Data Access Service (PASS) developed by EOX</Title>
    <OnlineResource xlink:href="https://sso.vhr18.pass.copernicus.eu/cache/ows/"
→xmlns:xlink="http://www.w3.org/1999/xlink"/>
  </Service>
  <Capability>
    <Request>
      <GetCapabilities>
        <Format>application/vnd.ogc.wms_xml</Format>
        <DCPType>
          <HTTP>
            <Get>
              <OnlineResource xlink:href="https://sso.vhr18.pass.copernicus.eu/cache/
→ows/" xmlns:xlink="http://www.w3.org/1999/xlink"/>
            </Get>
          </HTTP>
        </DCPType>
      </GetCapabilities>
      <GetMap>
        <Format>image/png</Format>
        <Format>image/jpeg</Format>
        <DCPType>
          <HTTP>
            <Get>
              <OnlineResource xlink:href="https://sso.vhr18.pass.copernicus.eu/cache/
→ows/" xmlns:xlink="http://www.w3.org/1999/xlink"/>
            </Get>
          </HTTP>
        </DCPType>
      </GetMap>
      <GetFeatureInfo>
        <Format>text/plain</Format>

```

(continues on next page)

(continued from previous page)

```

<Format>application/vnd.ogc.gml</Format>
<DCPType>
  <HTTP>
    <Get>
      <OnlineResource xlink:href="https://sso.vhr18.pass.copernicus.eu/cache/
↪ows/?" xmlns:xlink="http://www.w3.org/1999/xlink"/>
    </Get>
  </HTTP>
</DCPType>
</GetFeatureInfo>
</Request>
<Exception>
  <Format>text/plain</Format>
</Exception>
<VendorSpecificCapabilities>
  <stripped/>
</VendorSpecificCapabilities>
<Layer>
  <Title>PRISM Data Access Service (PASS) developed by EOX</Title>
  <SRS>EPSG:4326</SRS>
  <Layer cascaded="1" queryable="0">
    <Name>VHR_IMAGE_2018_Level_3__masked_validity</Name>
    <Title>VHR Image 2018 Level 3 True Color with masked validity</Title>
    <Abstract>VHR Image 2018 Level 3 True Color with masked validity</Abstract>
    <LatLonBoundingBox maxx="180.000000" maxy="90.000000" minx="-180.000000" miny=
↪"-90.000000"/>
    <Dimension default="2017/2019" name="time">2017-05-01T09:54:28Z/2019-10-
↪06T07:03:34Z</Dimension>
    <BoundingBox SRS="EPSG:4326" maxx="180.000000" maxy="90.000000" minx="-180.
↪000000" miny="-90.000000"/>
    <SRS>EPSG:4326</SRS>
  </Layer>
  <Layer cascaded="0" queryable="0">
    <Name>VHR_IMAGE_2018_Level_3__masked_validity__Full</Name>
    <Title>VHR Image 2018 Level 3 True Color with masked validity Full Coverage</
↪Title>
    <Abstract>VHR Image 2018 Level 3 True Color with masked validity Full Coverage
↪</Abstract>
    <LatLonBoundingBox maxx="45.000000" maxy="71.300000" minx="-24.700000" miny=
↪"27.500000"/>
    <BoundingBox SRS="EPSG:4326" maxx="45.000000" maxy="71.300000" minx="-24.
↪700000" miny="27.500000"/>
    <SRS>EPSG:4326</SRS>
  </Layer>
  <stripped_12_layers/>
</Layer>
</Capability>
</WMT_MS_Capabilities>

```

WMTS True color tile, WMTS False color tile, and WMTS NDVI tile. Same area via WMS request.

True Color non-pansharpened vhr15

True Color pansharpened vhr15

WMTS True color masked validity tile

WMTS Full layer



Figure 6.2.1: *WMTS - Non-pansharpened*



Figure 6.2.2: *WMTS - Pansharpened*

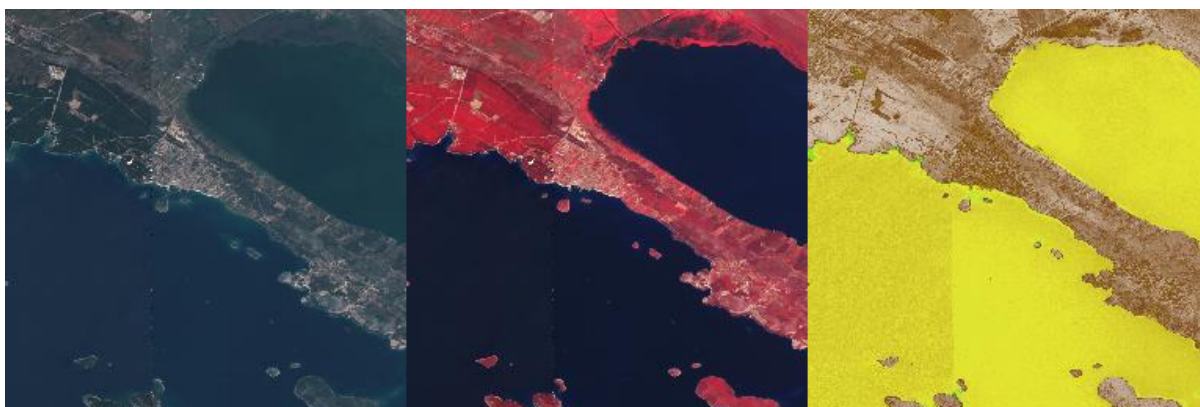


Figure 6.2.3: *WMTS Tiles - True color, false color, and NDVI*



Figure 6.2.4: *WMTS Tiles - Unmasked and masked*



Figure 6.2.5: *WMTS Tiles - Full layer*

WMS Full layer



Figure 6.2.6: WMS - Full layer

6.3 Flexible viewing

Capabilities for collection layers (example below) or Layer capabilities for one product

```

<?xml version='1.0' encoding='iso-8859-1'?>
<WMS_Capabilities updateSequence="20131219T132000Z" version="1.3.0" xmlns="http://www.
→opengis.net/wms" xmlns:xlink="http://www.w3.org/1999/xlink" xmlns:xsi="http://www.
→w3.org/2001/XMLSchema-instance" xsi:schemaLocation="">
  <Service>
    <Name>PRISM Data Access Service (PASS) developed by EOX</Name>
    <Title>PRISM Data Access Service (PASS) developed by EOX</Title>
    <Abstract>PRISM Data Access Service (PASS) developed by EOX</Abstract>
    <KeywordList>
      <Keyword>&lt;KEYWORDLIST&gt;</Keyword>
    </KeywordList>
    <OnlineResource>http://eoxserver.org</OnlineResource>
    <ContactInformation>
      <ContactPersonPrimary>
        <ContactPerson>&lt;CONTACTPERSON&gt;</ContactPerson>
        <ContactOrganization>&lt;CONTACTORGANIZATION&gt;</ContactOrganization>
      </ContactPersonPrimary>
      <ContactPosition>&lt;CONTACTPOSITION&gt;</ContactPosition>
      <ContactAddress>
        <AddressType>postal</AddressType>
        <Address>&lt;ADDRESS&gt;</Address>
        <City>&lt;CITY&gt;</City>
        <StateOrProvince>&lt;STATEORPROVINCE&gt;</StateOrProvince>
        <PostCode>&lt;POSTCODE&gt;</PostCode>
        <Country>&lt;COUNTRY&gt;</Country>
      </ContactAddress>
      <ContactVoiceTelephone>&lt;CONTACTVOICETELEPHONE&gt;</ContactVoiceTelephone>
      <ContactFacsimileTelephone>&lt;CONTACTFACSIMILETELEPHONE&gt;</
→ContactFacsimileTelephone>
      <ContactElectronicMailAddress>&lt;CONTACTELECTRONICMAILADDRESS&gt;</

```

(continues on next page)

(continued from previous page)

```

↪ContactElectronicMailAddress>
  </ContactInformation>
  <Fees>None</Fees>
  <AccessConstraints>None</AccessConstraints>
</Service>
<Capability>
  <Request>
    <GetCapabilities>
      <Format>text/xml</Format>
      <DCPType>
        <HTTP>
          <Get>
            <OnlineResource xlink:href="https://sso.vhr18.pass.copernicus.eu/ows" ↪
↪xlink:type="simple"/>
          </Get>
        </HTTP>
      </DCPType>
    </GetCapabilities>
    <GetMap>
      <Format>image/png</Format>
      <Format>image/jpeg</Format>
      <Format>image/gif</Format>
      <Format>image/tiff</Format>
      <DCPType>
        <HTTP>
          <Get>
            <OnlineResource xlink:href="https://sso.vhr18.pass.copernicus.eu/ows" ↪
↪xlink:type="simple"/>
          </Get>
        </HTTP>
      </DCPType>
    </GetMap>
    <GetFeatureInfo>
      <Format/>
      <DCPType>
        <HTTP>
          <Get>
            <OnlineResource xlink:href="https://sso.vhr18.pass.copernicus.eu/ows" ↪
↪xlink:type="simple"/>
          </Get>
        </HTTP>
      </DCPType>
    </GetFeatureInfo>
  </Request>
  <Exception>
    <Format>XML</Format>
    <Format>INIMAGE</Format>
    <Format>BLANK</Format>
  </Exception>
  <Layer>
    <Title>PRISM Data Access Service (PASS) developed by EOX</Title>
    <CRS>EPSG:4326</CRS>
    <CRS>EPSG:3857</CRS>
    <CRS>EPSG:3035</CRS>
    <EX_GeographicBoundingBox>
      <westBoundLongitude>-180</westBoundLongitude>

```

(continues on next page)

```

    <eastBoundLongitude>180</eastBoundLongitude>
    <southBoundLatitude>-90</southBoundLatitude>
    <northBoundLatitude>90</northBoundLatitude>
  </EX_GeographicBoundingBox>
  <stripped_2_layer_groups/>
  <Layer queryable="0">
    <Name>VHR_IMAGE_2018_Level_3</Name>
    <EX_GeographicBoundingBox>
      <westBoundLongitude>-24.6397992939</westBoundLongitude>
      <eastBoundLongitude>44.8308373419</eastBoundLongitude>
      <southBoundLatitude>27.5748429858</southBoundLatitude>
      <northBoundLatitude>71.2306420611</northBoundLatitude>
    </EX_GeographicBoundingBox>
    <Layer queryable="1">
      <Name>VHR_IMAGE_2018_Level_3__outlines</Name>
      <Style>
        <Name>brown</Name>
        <Abstract>brown</Abstract>
      </Style>
      <Style>
        <Name>yellow</Name>
        <Abstract>yellow</Abstract>
      </Style>
      <stripped_10_styles/>
    </Layer>
    <stripped_6_layers/>
    <Layer queryable="0">
      <Name>VHR_IMAGE_2018_Level_3__masked_validity</Name>
    </Layer>
    <Dimension default="2018-09-30T13:26:34Z" name="time" units="ISO8601">2017-05-
    ↪ 01T09:54:28Z/2018-09-30T13:26:34Z/PT1S</Dimension>
  </Layer>
</Layer>
</Capability>
</WMS_Capabilities>

```

Quicklook

False color

NDVI including style

Custom color stretch

Custom band selection as RGB and color stretch as False color rendering

CQL filtering on Cloud Coverage

Clouds mask

Masked clouds



Figure 6.3.1: *WMS - Quicklook*



Figure 6.3.2: *WMS - False color*

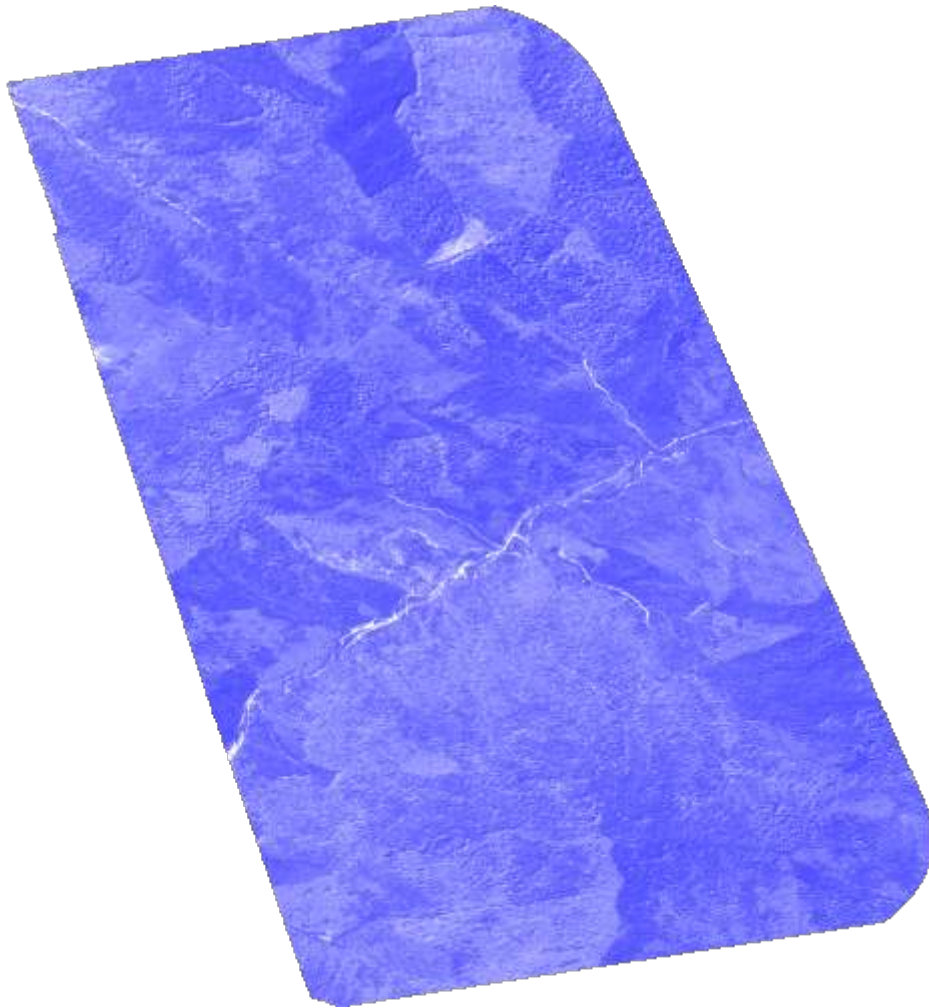


Figure 6.3.3: *WMS - NDVI custom style*



Figure 6.3.4: *WMS - Custom color stretch*



Figure 6.3.5: *WMS - Custom bands*



Figure 6.3.6: *WMS - CQL filtering*



Figure 6.3.7: *WMS - Clouds mask*



Figure 6.3.8: WMS - Masked clouds

6.3.1 DEM collections

DEM collections allow to specify rendering variables via vendor WMS parameter *VARIABLES*.

Following list summarizes offered renderings for DEM data together with keys and default values, passable into *VARIABLES* parameter and default *dim_range* (color stretch) parameter applied.

- *elevation* (standard DEM elevation rendering), no *VARIABLES* options. Can be used together with *dim_range*, *STYLE*, Default *dim_range*=-10 4000. Sample elevation rendering with *EARTH* style
- *contours*, *VARIABLES*=offset=0,interval=30. Default *dim_range*=0 360. Meaning of variables: interval, offset. Sample contours rendering
- *aspect*, *VARIABLES*=alg=Horn. Default *dim_range*=0 360. Meaning of variable: alg. Sample aspect rendering
- *hillshade*, *VARIABLES*=zfactor=5,azimuth=315,altitude=45,alg=Horn. Default *dim_range*=0 255. Meaning of variables: alg, azimuth, altitude. Sample hillshade rendering
- *slope*, *VARIABLES*=alg=Horn, Default *dim_range* 0 50. Sample slope rendering
- *roughness*, no *VARIABLES*, Default *dim_range*=0 20. Sample roughness map rendering
- *tri*, no *VARIABLES*, Default *dim_range*=0 8. Sample Terrain Ruggedness Index (TRI) rendering

6.4 Searching

1st step OSDD (stripped to only contain the Atom URL template)

```
<?xml version='1.0' encoding='iso-8859-1'?>
<OpenSearchDescription xmlns="http://a9.com/-/spec/opensearch/1.1/" xmlns:atom="http://
↪/www.w3.org/2005/Atom" xmlns:cql="http://a9.com/-/opensearch/extensions/cql/1.0/"
↪xmlns:eo="http://a9.com/-/opensearch/extensions/eo/1.0/" xmlns:geo="http://a9.com/-/
↪opensearch/extensions/geo/1.0/" xmlns:parameters="http://a9.com/-/spec/opensearch/
↪extensions/parameters/1.0/" xmlns:time="http://a9.com/-/opensearch/extensions/time/
↪1.0/" xmlns:xsi="http://www.w3.org/2001/XMLSchema-instance" xsi:schemaLocation="">
  <ShortName/>
  <Description/>
  <Url indexOffset="0" parameters:enctype="application/x-www-form-urlencoded"
↪parameters:method="GET" rel="collection" template="https://sso.vhr18.pass.
```

(continues on next page)

(continued from previous page)

```

↪ copernicus.eu/opensearch/atom/?q={searchTerms?}&count={count?}&startIndex=
↪ {startIndex?}&collection={eo:collection?}&productType={eo:productType?}&
↪ doi={eo:doi?}&platform={eo:platform?}&platformSerialIdentifier=
↪ {eo:platformSerialIdentifier?}&instrument={eo:instrument?}&sensorType=
↪ {eo:sensorType?}&compositeType={eo:compositeType?}&processingLevel=
↪ {eo:processingLevel?}&orbitType={eo:orbitType?}&spectralRange=
↪ {eo:spectralRange?}&wavelength={eo:wavelength?}&productMetadataSummary=
↪ {eo:productMetadataSummary?}&coverageMetadataSummary=
↪ {eo:coverageMetadataSummary?}&bbox={geo:box?}&geom={geo:geometry?}&lon=
↪ {geo:lon?}&lat={geo:lat?}&r={geo:radius?}&georel={geo:relation?}&
↪ uid={geo:uid?}&start={time:start?}&end={time:end?}&timerel=
↪ {time:relation?}&cql={cql:cql?}" type="application/atom+xml">
  <parameters:Parameter maximum="1" minimum="0" name="q" value="{searchTerms}"/>
  <parameters:Parameter maxInclusive="200" maximum="1" minInclusive="0" minimum="0"
↪ name="count" value="{count}"/>
  <parameters:Parameter maximum="1" minInclusive="0" minimum="0" name="startIndex"
↪ value="{startIndex}"/>
  <parameters:Parameter maximum="1" minimum="0" name="collection" value="
↪ {eo:collection}"/>
  <parameters:Parameter maximum="1" minimum="0" name="productType" value="
↪ {eo:productType}"/>
  <parameters:Parameter maximum="1" minimum="0" name="doi" value="{eo:doi}"/>
  <parameters:Parameter maximum="1" minimum="0" name="platform" value="{eo:platform}
↪ "/>
  <parameters:Parameter maximum="1" minimum="0" name="platformSerialIdentifier"
↪ value="{eo:platformSerialIdentifier}"/>
  <parameters:Parameter maximum="1" minimum="0" name="instrument" value="
↪ {eo:instrument}"/>
  <parameters:Parameter maximum="1" minimum="0" name="sensorType" value="
↪ {eo:sensorType}"/>
  <parameters:Parameter maximum="1" minimum="0" name="compositeType" value="
↪ {eo:compositeType}"/>
  <parameters:Parameter maximum="1" minimum="0" name="processingLevel" value="
↪ {eo:processingLevel}"/>
  <parameters:Parameter maximum="1" minimum="0" name="orbitType" value="
↪ {eo:orbitType}"/>
  <parameters:Parameter maximum="1" minimum="0" name="spectralRange" value="
↪ {eo:spectralRange}"/>
  <parameters:Parameter maximum="1" minimum="0" name="wavelength" value="
↪ {eo:wavelength}"/>
  <parameters:Parameter maximum="1" minimum="0" name="productMetadataSummary" value="
↪ {eo:productMetadataSummary}"/>
  <parameters:Parameter maximum="1" minimum="0" name="coverageMetadataSummary"
↪ value="{eo:coverageMetadataSummary}"/>
  <parameters:Parameter maximum="1" minimum="0" name="bbox" value="{geo:box}"/>
  <parameters:Parameter maximum="1" minimum="0" name="geom" value="{geo:geometry}">
    <atom:link href="http://www.opengis.net/wkt/LINESTRING" rel="profile" title=
↪ "This service accepts WKT LineStrings"/>
    <atom:link href="http://www.opengis.net/wkt/POINT" rel="profile" title="This
↪ service accepts WKT Point"/>
    <atom:link href="http://www.opengis.net/wkt/POLYGON" rel="profile" title="This
↪ service accepts WKT Polygons"/>
    <atom:link href="http://www.opengis.net/wkt/MULTILINESTRING" rel="profile"
↪ title="This service accepts WKT Multi-LineStrings"/>
    <atom:link href="http://www.opengis.net/wkt/MULTIPOINT" rel="profile" title=
↪ "This service accepts WKT Multi-Point"/>

```

(continues on next page)

(continued from previous page)

```

    <atom:link href="http://www.opengis.net/wkt/MULTIPOLYGON" rel="profile" title=
    ↪ "This service accepts WKT Multi-Polygons"/>
  </parameters:Parameter>
  <parameters:Parameter maximum="1" minimum="0" name="lon" value="{geo:lon}"/>
  <parameters:Parameter maximum="1" minimum="0" name="lat" value="{geo:lat}"/>
  <parameters:Parameter maximum="1" minimum="0" name="r" value="{geo:radius}"/>
  <parameters:Parameter maximum="1" minimum="0" name="georel" value="{geo:relation}
  ↪ ">
    <parameters:Option label="intersects" value="intersects"/>
    <parameters:Option label="contains" value="contains"/>
    <parameters:Option label="disjoint" value="disjoint"/>
  </parameters:Parameter>
  <parameters:Parameter maximum="1" minimum="0" name="uid" value="{geo:uid}"/>
  <parameters:Parameter maximum="1" minimum="0" name="start" value="{time:start}"/>
  <parameters:Parameter maximum="1" minimum="0" name="end" value="{time:end}"/>
  <parameters:Parameter maximum="1" minimum="0" name="timere1" value="
  ↪ {time:relation}">
    <parameters:Option label="intersects" value="intersects"/>
    <parameters:Option label="contains" value="contains"/>
    <parameters:Option label="disjoint" value="disjoint"/>
    <parameters:Option label="equals" value="equals"/>
  </parameters:Parameter>
  <parameters:Parameter maximum="1" minimum="0" name="cql" value="{cql:cql}">
    <atom:link href="http://www.opengis.net/csw/3.0/cql" rel="profile" title="CQL
    ↪ (Common Query Language) is a query language created by the OGC for the Catalogue
    ↪ Web Services specification."/>
  </parameters:Parameter>
</Url>
<stripped/>
</OpenSearchDescription>

```

1st step search for collections

```

<feed xmlns="http://www.w3.org/2005/Atom" xmlns:cql="http://a9.com/-/opensearch/
  ↪ extensions/cql/1.0/" xmlns:dc="http://purl.org/dc/elements/1.1/" xmlns:eo="http://
  ↪ a9.com/-/opensearch/extensions/eo/1.0/" xmlns:geo="http://a9.com/-/opensearch/
  ↪ extensions/geo/1.0/" xmlns:georss="http://www.georss.org/georss" xmlns:media="http://
  ↪ /search.yahoo.com/mrss/" xmlns:opensearch="http://a9.com/-/spec/opensearch/1.1/"
  ↪ xmlns:owc="http://www.opengis.net/owc/1.0" xmlns:time="http://a9.com/-/opensearch/
  ↪ extensions/time/1.0/">
  <id>https://sso.vhr18.pass.copernicus.eu/opensearch/atom/</id>
  <title>None Search</title>
  <description/>
  <opensearch:totalResults>3</opensearch:totalResults>
  <opensearch:startIndex>0</opensearch:startIndex>
  <opensearch:itemsPerPage>3</opensearch:itemsPerPage>
  <opensearch:Query role="request"/>
  <link href="https://sso.vhr18.pass.copernicus.eu/opensearch/" rel="search" type=
  ↪ "application/opensearchdescription+xml"/>
  <link href="https://sso.vhr18.pass.copernicus.eu/opensearch/atom/" rel="self" type=
  ↪ "application/atom+xml"/>
  <link href="https://sso.vhr18.pass.copernicus.eu/opensearch/atom/?" rel="first"
  ↪ type="application/atom+xml"/>
  <link href="https://sso.vhr18.pass.copernicus.eu/opensearch/atom/?startIndex=0" rel=
  ↪ "last" type="application/atom+xml"/>
  <entry>

```

(continues on next page)

```

<title>VHR_IMAGE_2018_Level_3</title>
<id>https://sso.vhr18.pass.copernicus.eu/opensearch/atom/?uid=VHR_IMAGE_2018_
↪Level_3</id>
<dc:identifier>VHR_IMAGE_2018_Level_3</dc:identifier>
<dc:date>2017-05-01T09:54:28Z/2018-09-30T13:26:34Z</dc:date>
<georss:box>27.574843 -24.639799 71.230642 44.830837</georss:box>
<georss:where>
  <gml:MultiSurface gml:id="multisurface_VHR_IMAGE_2018_Level_3" srsName=
↪"EPSG:4326" xmlns:eop="http://www.opengis.net/eop/2.0" xmlns:gml="http://www.
↪opengis.net/gml/3.2" xmlns:gmlcov="http://www.opengis.net/gmlcov/1.0" xmlns:om=
↪"http://www.opengis.net/om/2.0">
    <gml:surfaceMember>
      <gml:Polygon gml:id="polygon_VHR_IMAGE_2018_Level_3">
        <gml:exterior>
          <gml:LinearRing>
            <gml:posList>27.57484299 -24.63979929 71.23064206 -24.63979929 71.
↪23064206 44.83083734 27.57484299 44.83083734 27.57484299 -24.63979929</gml:posList>
          </gml:LinearRing>
        </gml:exterior>
      </gml:Polygon>
    </gml:surfaceMember>
  </gml:MultiSurface>
</georss:where>
<link href="https://sso.vhr18.pass.copernicus.eu/opensearch/collections/VHR_IMAGE_
↪2018_Level_3/" rel="search" type="application/opensearchdescription+xml"/>
<summary type="html">
  <![CDATA[<table><tr><td valign="top" width="10%"><a href="https://sso.vhr18.
↪pass.copernicus.eu/ows?service=WMS&version=1.3.0&request=GetMap&
↪layers=VHR_IMAGE_2018_Level_3&format=image/png&TRANSPARENT=true&
↪width=500&height=314&CRS=EPSG:4326&STYLES=&BBOX=27.574843,-24.
↪639799,71.230642,44.830837" target="_blank" title="View quicklook image"></a>
↪</td><td valign="top" width="90%"><table><tr valign="top"><td><b>Date </b></td><td>
↪2017-05-01T09:54:28+00:00 / 2018-09-30T13:26:34+00:00</td></tr><tr valign="top"><td>
↪<b>Metadata</b></td><td><a href="https://sso.vhr18.pass.copernicus.eu/opensearch/
↪atom/?uid=VHR_IMAGE_2018_Level_3" title="Atom format" target="_blank">ATOM</a></td>
↪</tr></table></td></tr></table><h3>OGC cross links</h3><ul><li><b>WMS</b></li><li><a
↪href="https://sso.vhr18.pass.copernicus.eu/ows?service=WMS&
↪request=GetCapabilities&qql=identifier=&#39;VHR_IMAGE_2018_Level_3&#39;" target=
↪"_blank">GetCapabilities</a></li></ul><ul><li><a href="https://sso.vhr18.pass.
↪copernicus.eu/ows?service=WMS&version=1.3.0&request=GetMap&layers=VHR_
↪IMAGE_2018_Level_3&format=image/png&TRANSPARENT=true&width=500&
↪height=314&CRS=EPSG:4326&STYLES=&BBOX=27.574843,-24.639799,71.230642,44.
↪830837" target="_blank">GetMap</a></li></ul></li><li><b>WCS</b></li><li><a href=
↪"https://sso.vhr18.pass.copernicus.eu/ows?service=WCS&version=2.0.1&
↪request=DescribeEOCoverageSet&eoId=VHR_IMAGE_2018_Level_3" target="_blank">
↪DescribeEOCoverageSet</a></li></ul></li></ul><h3>Metadata</h3><table></table>]]>
</summary>
</entry>
</feed>

```

2nd step OSDD (stripped to only contain the Atom URL template)

```

<?xml version='1.0' encoding='iso-8859-1'?>
<OpenSearchDescription xmlns="http://a9.com/-/spec/opensearch/1.1/" xmlns:atom="http://
  ↪www.w3.org/2005/Atom" xmlns:cql="http://a9.com/-/opensearch/extensions/cql/1.0/"
  ↪xmlns:eo="http://a9.com/-/opensearch/extensions/eo/1.0/" xmlns:geo="http://a9.com/-/
  ↪opensearch/extensions/geo/1.0/" xmlns:parameters="http://a9.com/-/spec/opensearch/
  ↪extensions/parameters/1.0/" xmlns:time="http://a9.com/-/opensearch/extensions/time/
  ↪1.0/" xmlns:xsi="http://www.w3.org/2001/XMLSchema-instance" xsi:schemaLocation="">
  <ShortName>VHR_IMAGE_2018_Level_3</ShortName>
  <Description/>
  <Url indexOffset="0" parameters:enctype="application/x-www-form-urlencoded"
  ↪parameters:method="GET" rel="results" template="https://sso.vhr18.pass.copernicus.
  ↪eu/opensearch/collections/VHR_IMAGE_2018_Level_3/atom/?q={searchTerms?}&count=
  ↪{count?}&startIndex={startIndex?}&product={eo:product?}&
  ↪parentIdentifier={eo:parentIdentifier?}&productionStatus={eo:productionStatus?}&
  ↪amp;acquisitionType={eo:acquisitionType?}&orbitNumber={eo:orbitNumber?}&
  ↪orbitDirection={eo:orbitDirection?}&track={eo:track?}&frame={eo:frame?}&
  ↪swathIdentifier={eo:swathIdentifier?}&productVersion={eo:productVersion?}&
  ↪productQualityStatus={eo:productQualityStatus?}&productQualityDegradationTag=
  ↪{eo:productQualityDegradationTag?}&processorName={eo:processorName?}&
  ↪processingCenter={eo:processingCenter?}&creationDate={eo:creationDate?}&
  ↪modificationDate={eo:modificationDate?}&processingDate={eo:processingDate?}&
  ↪sensorMode={eo:sensorMode?}&archivingCenter={eo:archivingCenter?}&
  ↪processingMode={eo:processingMode?}&availabilityTime={eo:availabilityTime?}&
  ↪acquisitionStation={eo:acquisitionStation?}&acquisitionSubType=
  ↪{eo:acquisitionSubType?}&startTimeFromAscendingNode=
  ↪{eo:startTimeFromAscendingNode?}&completionTimeFromAscendingNode=
  ↪{eo:completionTimeFromAscendingNode?}&illuminationAzimuthAngle=
  ↪{eo:illuminationAzimuthAngle?}&illuminationZenithAngle=
  ↪{eo:illuminationZenithAngle?}&illuminationElevationAngle=
  ↪{eo:illuminationElevationAngle?}&polarisationMode={eo:polarisationMode?}&
  ↪polarizationChannels={eo:polarizationChannels?}&antennaLookDirection=
  ↪{eo:antennaLookDirection?}&minimumIncidenceAngle={eo:minimumIncidenceAngle?}&
  ↪maximumIncidenceAngle={eo:maximumIncidenceAngle?}&dopplerFrequency=
  ↪{eo:dopplerFrequency?}&incidenceAngleVariation={eo:incidenceAngleVariation?}&
  ↪cloudCover={eo:cloudCover?}&snowCover={eo:snowCover?}&lowestLocation=
  ↪{eo:lowestLocation?}&highestLocation={eo:highestLocation?}&bbox={geo:box?}&
  ↪geom={geo:geometry?}&lon={geo:lon?}&lat={geo:lat?}&r={geo:radius?}&
  ↪georel={geo:relation?}&uid={geo:uid?}&start={time:start?}&end=
  ↪{time:end?}&timerel={time:relation?}&cql={cql:cql?}" type="application/
  ↪atom+xml">
    <parameters:Parameter maximum="1" minimum="0" name="q" value="{searchTerms}"/>
    <parameters:Parameter maxInclusive="200" maximum="1" minInclusive="0" minimum="0"
  ↪name="count" value="{count}"/>
    <parameters:Parameter maximum="1" minInclusive="0" minimum="0" name="startIndex"
  ↪value="{startIndex}"/>
    <parameters:Parameter maximum="1" minimum="0" name="product" value="{eo:product}"/>
  ↪>
    <parameters:Parameter maximum="1" minimum="0" name="parentIdentifier" value="
  ↪{eo:parentIdentifier}"/>
    <parameters:Parameter maximum="1" minimum="0" name="productionStatus" value="
  ↪{eo:productionStatus}">
      <parameters:Option label="ACQUIRED" value="ACQUIRED"/>
      <parameters:Option label="CANCELLED" value="CANCELLED"/>
      <parameters:Option label="ARCHIVED" value="ARCHIVED"/>
    </parameters:Parameter>
    <parameters:Parameter maximum="1" minimum="0" name="acquisitionType" value="
  ↪{eo:acquisitionType}">

```

(continues on next page)

```

    <parameters:Option label="NOMINAL" value="NOMINAL"/>
    <parameters:Option label="OTHER" value="OTHER"/>
    <parameters:Option label="CALIBRATION" value="CALIBRATION"/>
  </parameters:Parameter>
  <parameters:Parameter maximum="1" minimum="0" name="orbitNumber" value="
↪{eo:orbitNumber}"/>
    <parameters:Parameter maximum="1" minimum="0" name="orbitDirection" value="
↪{eo:orbitDirection}">
      <parameters:Option label="DESCENDING" value="DESCENDING"/>
      <parameters:Option label="ASCENDING" value="ASCENDING"/>
    </parameters:Parameter>
    <parameters:Parameter maximum="1" minimum="0" name="track" value="{eo:track}"/>
    <parameters:Parameter maximum="1" minimum="0" name="frame" value="{eo:frame}"/>
    <parameters:Parameter maximum="1" minimum="0" name="swathIdentifier" value="
↪{eo:swathIdentifier}"/>
    <parameters:Parameter maximum="1" minimum="0" name="productVersion" value="
↪{eo:productVersion}"/>
    <parameters:Parameter maximum="1" minimum="0" name="productQualityStatus" value="
↪{eo:productQualityStatus}">
      <parameters:Option label="DEGRAGED" value="DEGRAGED"/>
      <parameters:Option label="NOMINAL" value="NOMINAL"/>
    </parameters:Parameter>
    <parameters:Parameter maximum="1" minimum="0" name="productQualityDegradationTag"
↪value="{eo:productQualityDegradationTag}"/>
    <parameters:Parameter maximum="1" minimum="0" name="processorName" value="
↪{eo:processorName}"/>
    <parameters:Parameter maximum="1" minimum="0" name="processingCenter" value="
↪{eo:processingCenter}"/>
    <parameters:Parameter maximum="1" minimum="0" name="creationDate" value="
↪{eo:creationDate}"/>
    <parameters:Parameter maximum="1" minimum="0" name="modificationDate" value="
↪{eo:modificationDate}"/>
    <parameters:Parameter maximum="1" minimum="0" name="processingDate" value="
↪{eo:processingDate}"/>
    <parameters:Parameter maximum="1" minimum="0" name="sensorMode" value="
↪{eo:sensorMode}"/>
    <parameters:Parameter maximum="1" minimum="0" name="archivingCenter" value="
↪{eo:archivingCenter}"/>
    <parameters:Parameter maximum="1" minimum="0" name="processingMode" value="
↪{eo:processingMode}"/>
    <parameters:Parameter maximum="1" minimum="0" name="availabilityTime" value="
↪{eo:availabilityTime}"/>
    <parameters:Parameter maximum="1" minimum="0" name="acquisitionStation" value="
↪{eo:acquisitionStation}"/>
    <parameters:Parameter maximum="1" minimum="0" name="acquisitionSubType" value="
↪{eo:acquisitionSubType}"/>
    <parameters:Parameter maximum="1" minimum="0" name="startTimeFromAscendingNode"
↪value="{eo:startTimeFromAscendingNode}"/>
    <parameters:Parameter maximum="1" minimum="0" name="
↪completionTimeFromAscendingNode" value="{eo:completionTimeFromAscendingNode}"/>
    <parameters:Parameter maximum="1" minimum="0" name="illuminationAzimuthAngle"
↪value="{eo:illuminationAzimuthAngle}"/>
    <parameters:Parameter maximum="1" minimum="0" name="illuminationZenithAngle"
↪value="{eo:illuminationZenithAngle}"/>
    <parameters:Parameter maximum="1" minimum="0" name="illuminationElevationAngle"
↪value="{eo:illuminationElevationAngle}"/>

```

(continues on next page)

(continued from previous page)

```

<parameters:Parameter maximum="1" minimum="0" name="polarisationMode" value="
↪{eo:polarisationMode}">
  <parameters:Option label="quad" value="quad"/>
  <parameters:Option label="single" value="single"/>
  <parameters:Option label="twin" value="twin"/>
  <parameters:Option label="dual" value="dual"/>
  <parameters:Option label="UNDEFINED" value="UNDEFINED"/>
</parameters:Parameter>
<parameters:Parameter maximum="1" minimum="0" name="polarizationChannels" value="
↪{eo:polarizationChannels}">
  <parameters:Option label="UNDEFINED" value="UNDEFINED"/>
  <parameters:Option label="VH" value="VH"/>
  <parameters:Option label="HH, HV" value="HH, HV"/>
  <parameters:Option label="HH, HV, VH, VV" value="HH, HV, VH, VV"/>
  <parameters:Option label="HV" value="HV"/>
  <parameters:Option label="HH, VV" value="HH, VV"/>
  <parameters:Option label="HH, VH" value="HH, VH"/>
  <parameters:Option label="VV, HV" value="VV, HV"/>
  <parameters:Option label="HH" value="HH"/>
  <parameters:Option label="HV, VH" value="HV, VH"/>
  <parameters:Option label="VV" value="VV"/>
  <parameters:Option label="VH, VV" value="VH, VV"/>
  <parameters:Option label="VH, HV" value="VH, HV"/>
  <parameters:Option label="VV, VH" value="VV, VH"/>
</parameters:Parameter>
<parameters:Parameter maximum="1" minimum="0" name="antennaLookDirection" value="
↪{eo:antennaLookDirection}">
  <parameters:Option label="RIGHT" value="RIGHT"/>
  <parameters:Option label="LEFT" value="LEFT"/>
</parameters:Parameter>
<parameters:Parameter maximum="1" minimum="0" name="minimumIncidenceAngle" value="
↪{eo:minimumIncidenceAngle}"/>
<parameters:Parameter maximum="1" minimum="0" name="maximumIncidenceAngle" value="
↪{eo:maximumIncidenceAngle}"/>
<parameters:Parameter maximum="1" minimum="0" name="dopplerFrequency" value="
↪{eo:dopplerFrequency}"/>
<parameters:Parameter maximum="1" minimum="0" name="incidenceAngleVariation"
↪value="{eo:incidenceAngleVariation}"/>
<parameters:Parameter maximum="1" minimum="0" name="cloudCover" value="
↪{eo:cloudCover}"/>
<parameters:Parameter maximum="1" minimum="0" name="snowCover" value="
↪{eo:snowCover}"/>
<parameters:Parameter maximum="1" minimum="0" name="lowestLocation" value="
↪{eo:lowestLocation}"/>
<parameters:Parameter maximum="1" minimum="0" name="highestLocation" value="
↪{eo:highestLocation}"/>
<parameters:Parameter maximum="1" minimum="0" name="bbox" value="{geo:box}"/>
<parameters:Parameter maximum="1" minimum="0" name="geom" value="{geo:geometry}">
  <atom:link href="http://www.opengis.net/wkt/LINESTRING" rel="profile" title=
↪"This service accepts WKT LineStrings"/>
  <atom:link href="http://www.opengis.net/wkt/POINT" rel="profile" title="This
↪service accepts WKT Point"/>
  <atom:link href="http://www.opengis.net/wkt/POLYGON" rel="profile" title="This
↪service accepts WKT Polygons"/>
  <atom:link href="http://www.opengis.net/wkt/MULTILINESTRING" rel="profile"
↪title="This service accepts WKT Multi-LineStrings"/>

```

(continues on next page)

(continued from previous page)

```

    <atom:link href="http://www.opengis.net/wkt/MULTIPOINT" rel="profile" title=
    ↪ "This service accepts WKT Multi-Point"/>
    <atom:link href="http://www.opengis.net/wkt/MULTIPOLYGON" rel="profile" title=
    ↪ "This service accepts WKT Multi-Polygons"/>
  </parameters:Parameter>
  <parameters:Parameter maximum="1" minimum="0" name="lon" value="{geo:lon}"/>
  <parameters:Parameter maximum="1" minimum="0" name="lat" value="{geo:lat}"/>
  <parameters:Parameter maximum="1" minimum="0" name="r" value="{geo:radius}"/>
  <parameters:Parameter maximum="1" minimum="0" name="georel" value="{geo:relation}
  ↪ ">
  <parameters:Option label="intersects" value="intersects"/>
  <parameters:Option label="contains" value="contains"/>
  <parameters:Option label="disjoint" value="disjoint"/>
</parameters:Parameter>
<parameters:Parameter maximum="1" minimum="0" name="uid" value="{geo:uid}"/>
<parameters:Parameter maximum="1" minimum="0" name="start" value="{time:start}"/>
<parameters:Parameter maximum="1" minimum="0" name="end" value="{time:end}"/>
<parameters:Parameter maximum="1" minimum="0" name="timere1" value="
  ↪ {time:relation}">
  <parameters:Option label="intersects" value="intersects"/>
  <parameters:Option label="contains" value="contains"/>
  <parameters:Option label="disjoint" value="disjoint"/>
  <parameters:Option label="equals" value="equals"/>
</parameters:Parameter>
<parameters:Parameter maximum="1" minimum="0" name="cql" value="{cql:cql}">
  <atom:link href="http://www.opengis.net/csw/3.0/cql" rel="profile" title="CQL
  ↪ (Common Query Language) is a query language created by the OGC for the Catalogue
  ↪ Web Services specification."/>
</parameters:Parameter>
</Url>
<stripped/>
</OpenSearchDescription>

```

2nd step search and 2nd step search returning one product

```

<feed xmlns="http://www.w3.org/2005/Atom" xmlns:cql="http://a9.com/-/opensearch/
  ↪ extensions/cql/1.0/" xmlns:dc="http://purl.org/dc/elements/1.1/" xmlns:eo="http://
  ↪ a9.com/-/opensearch/extensions/eo/1.0/" xmlns:geo="http://a9.com/-/opensearch/
  ↪ extensions/geo/1.0/" xmlns:georss="http://www.georss.org/georss" xmlns:media="http://
  ↪ search.yahoo.com/mrss/" xmlns:opensearch="http://a9.com/-/spec/opensearch/1.1/"
  ↪ xmlns:owc="http://www.opengis.net/owc/1.0" xmlns:time="http://a9.com/-/opensearch/
  ↪ extensions/time/1.0/">
  <id>https://sso.vhr18.pass.copernicus.eu/opensearch/collections/VHR_IMAGE_2018_
  ↪ Level_3/atom/?uid=urn:eop:DOVE:MULTISPECTRAL_4m:20180811_081455_1054_3be7</id>
  <title>VHR_IMAGE_2018_Level_3 Search</title>
  <description/>
  <opensearch:totalResults>1</opensearch:totalResults>
  <opensearch:startIndex>0</opensearch:startIndex>
  <opensearch:itemsPerPage>1</opensearch:itemsPerPage>
  <opensearch:Query geo:uid="urn:eop:DOVE:MULTISPECTRAL_4m:20180811_081455_1054_3be7"
  ↪ role="request"/>
  <link href="https://sso.vhr18.pass.copernicus.eu/opensearch/" rel="search" type=
  ↪ "application/opensearchdescription+xml"/>
  <link href="https://sso.vhr18.pass.copernicus.eu/opensearch/collections/VHR_IMAGE_
  ↪ 2018_Level_3/atom/?uid=urn:eop:DOVE:MULTISPECTRAL_4m:20180811_081455_1054_3be7" rel=
  ↪ "self" type="application/atom+xml"/>

```

(continues on next page)

(continued from previous page)

```

<link href="https://sso.vhr18.pass.copernicus.eu/opensearch/collections/VHR_IMAGE_
↪2018_Level_3/atom/?uid=urn%3Aeop%3ADOVE%3AMULTISPECTRAL_4m%3A20180811_081455_1054_
↪3be7" rel="first" type="application/atom+xml"/>
<link href="https://sso.vhr18.pass.copernicus.eu/opensearch/collections/VHR_IMAGE_
↪2018_Level_3/atom/?startIndex=0&uid=urn%3Aeop%3ADOVE%3AMULTISPECTRAL_4m
↪%3A20180811_081455_1054_3be7" rel="last" type="application/atom+xml"/>
<entry>
  <title>urn:eop:DOVE:MULTISPECTRAL_4m:20180811_081455_1054_3be7</title>
  <id>https://sso.vhr18.pass.copernicus.eu/opensearch/collections/VHR_IMAGE_2018_
↪Level_3/atom/?uid=urn:eop:DOVE:MULTISPECTRAL_4m:20180811_081455_1054_3be7</id>
  <dc:identifier>urn:eop:DOVE:MULTISPECTRAL_4m:20180811_081455_1054_3be7</
↪dc:identifier>
  <dc:date>2018-08-11T08:14:55Z</dc:date>
  <georss:box>47.297788 25.978201 47.372606 26.047511</georss:box>
  <georss:where>
    <gml:MultiSurface gml:id="multisurface_urn:eop:DOVE:MULTISPECTRAL_4m:20180811_
↪081455_1054_3be7" srsName="EPSG:4326" xmlns:eop="http://www.opengis.net/eop/2.0"
↪xmlns:gml="http://www.opengis.net/gml/3.2" xmlns:gmlcov="http://www.opengis.net/
↪gmlcov/1.0" xmlns:om="http://www.opengis.net/om/2.0">
      <gml:surfaceMember>
        <gml:Polygon gml:id="polygon_urn:eop:DOVE:MULTISPECTRAL_4m:20180811_081455_
↪1054_3be7_1">
          <gml:exterior>
            <gml:LinearRing>
              <gml:posList>47.29778796 26.00330821 47.29784395 26.00300545 47.
↪29852855 26.00098039 47.33176050 25.98961353 47.35564999 25.98157482 47.35572189 25.
↪98204011 47.36693204 25.97820059 47.37260630 26.01455420 47.37197192 26.01658883 47.
↪37098788 26.01863079 47.36976416 26.02036682 47.36834411 26.02173541 47.36677806 26.
↪02268812 47.31293985 26.04698765 47.31114307 26.04751063 47.30931486 26.04748521 47.
↪30753117 26.04691252 47.30586607 26.04581637 47.30438870 26.04424235 47.30409927 26.
↪04377423 47.29778796 26.00330821</gml:posList>
            </gml:LinearRing>
          </gml:exterior>
        </gml:Polygon>
      </gml:surfaceMember>
    </gml:MultiSurface>
  </georss:where>
  <link href="https://sso.vhr18.pass.copernicus.eu/ows?service=DSEO&version=1.0.
↪0&request=GetProduct&ProductURI=urn:eop:DOVE:MULTISPECTRAL_4m:20180811_
↪081455_1054_3be7" rel="enclosure"/>
  <media:content url="https://sso.vhr18.pass.copernicus.eu/ows?service=WMS&
↪version=1.3.0&request=GetMap&layers=urn:eop:DOVE:MULTISPECTRAL_4m:20180811_
↪081455_1054_3be7&format=image/png&TRANSPARENT=true&width=463&
↪height=500&CRS=EPSG:4326&STYLES=&BBOX=47.297788,25.978201,47.372606,26.
↪047511">
    <media:category>QUICKLOOK</media:category>
  </media:content>
  <media:content url="https://sso.vhr18.pass.copernicus.eu/ows?service=WMS&
↪version=1.3.0&request=GetMap&layers=urn:eop:DOVE:MULTISPECTRAL_4m:20180811_
↪081455_1054_3be7&format=image/png&TRANSPARENT=true&width=92&
↪height=100&CRS=EPSG:4326&STYLES=&BBOX=47.297788,25.978201,47.372606,26.
↪047511">
    <media:category>THUMBNAIL</media:category>
  </media:content>
  <owc:offering code="http://www.opengis.net/spec/owc-atom/1.0/req/wms">
    <owc:operation code="GetCapabilities" href="https://sso.vhr18.pass.copernicus.

```

(continues on next page)

(continued from previous page)

```

↪ eu/ows?service=WMS&request=GetCapabilities&cql=identifier=
↪ 'urn:eop:DOVE:MULTISPECTRAL_4m:20180811_081455_1054_3be7'" method="GET" type=
↪ "application/xml"/>
    <owc:operation code="GetMap" href="https://sso.vhr18.pass.copernicus.eu/ows?
↪ service=WMS&version=1.3.0&request=GetMap&
↪ layers=urn:eop:DOVE:MULTISPECTRAL_4m:20180811_081455_1054_3be7&format=image/png&
↪ amp;TRANSPARENT=true&width=463&height=500&CRS=EPSG:4326&STYLES=&
↪ BBOX=47.297788,25.978201,47.372606,26.047511" method="GET" type="image/png"/>
    </owc:offering>
    <owc:offering code="http://www.opengis.net/spec/owc-atom/1.0/req/wcs">
        <owc:operation code="GetCapabilities" href="https://sso.vhr18.pass.copernicus.
↪ eu/ows?service=WCS&version=2.0.1&request=GetCapabilities" method="GET" type=
↪ "application/xml"/>
        <owc:operation code="DescribeCoverage" href="https://sso.vhr18.pass.copernicus.
↪ eu/ows?service=WCS&version=2.0.1&request=DescribeCoverage&
↪ coverageId=urn:eop:DOVE:MULTISPECTRAL_4m:20180811_081455_1054_3be7__coverage"
↪ method="GET" type="application/xml"/>
        <owc:operation code="GetCoverage" href="https://sso.vhr18.pass.copernicus.eu/
↪ ows?service=WCS&version=2.0.1&request=GetCoverage&
↪ coverageId=urn:eop:DOVE:MULTISPECTRAL_4m:20180811_081455_1054_3be7__coverage"
↪ method="GET" type="image/tiff"/>
    </owc:offering>
    <summary type="html">
        <![CDATA[<table><tr><td valign="top" width="10%"><a href="https://sso.vhr18.
↪ pass.copernicus.eu/ows?service=WMS&version=1.3.0&request=GetMap&
↪ layers=urn:eop:DOVE:MULTISPECTRAL_4m:20180811_081455_1054_3be7&format=image/png&
↪ amp;TRANSPARENT=true&width=463&height=500&CRS=EPSG:4326&STYLES=&
↪ BBOX=47.297788,25.978201,47.372606,26.047511" target="_blank" title="View quicklook.
↪ image"></a></td><td valign="top" width="90
↪ %"><table><tr valign="top"><td><b>Date </b></td><td>2018-08-11T08:14:55+00:00 /
↪ 2018-08-11T08:14:55+00:00</td></tr><tr valign="top"><td><b>Metadata</b></td><td><a
↪ href="https://sso.vhr18.pass.copernicus.eu/opensearch/collections/VHR_IMAGE_2018_
↪ Level_3/atom/?uid=urn:eop:DOVE:MULTISPECTRAL_4m:20180811_081455_1054_3be7" title=
↪ "Atom format" target="_blank">ATOM</a></td></tr><tr valign="top"><td><b>Download</b>
↪ </td><td><a href="https://sso.vhr18.pass.copernicus.eu/ows?service=DSEO&
↪ version=1.0.0&request=GetProduct&ProductURI=urn:eop:DOVE:MULTISPECTRAL_
↪ 4m:20180811_081455_1054_3be7" title="Download" target="_blank">Package</a></td></tr>
↪ </table></td></tr></table><h3>OGC cross links</h3><ul><li><b>WMS</b></li><li><a href=
↪ "https://sso.vhr18.pass.copernicus.eu/ows?service=WMS&request=GetCapabilities&
↪ amp;cql=identifier=&#39;urn:eop:DOVE:MULTISPECTRAL_4m:20180811_081455_1054_3be7&#39;
↪ " target="_blank">GetCapabilities</a></li></ul><ul><li><a href="https://sso.vhr18.
↪ pass.copernicus.eu/ows?service=WMS&version=1.3.0&request=GetMap&
↪ layers=urn:eop:DOVE:MULTISPECTRAL_4m:20180811_081455_1054_3be7&format=image/png&
↪ amp;TRANSPARENT=true&width=463&height=500&CRS=EPSG:4326&STYLES=&
↪ BBOX=47.297788,25.978201,47.372606,26.047511" target="_blank">GetMap</a></li></ul></
↪ li><li><b>WCS</b></li><li><a href="https://sso.vhr18.pass.copernicus.eu/ows?
↪ service=WCS&version=2.0.1&request=DescribeEOCoverageSet&
↪ eoId=urn:eop:DOVE:MULTISPECTRAL_4m:20180811_081455_1054_3be7" target="_blank">
↪ DescribeEOCoverageSet</a></li><li><b>urn:eop:DOVE:MULTISPECTRAL_4m:20180811_081455_
↪ 1054_3be7__coverage</b></li><li><a href="https://sso.vhr18.pass.copernicus.eu/ows?
↪ service=WCS&version=2.0.1&request=DescribeCoverage&
↪ coverageId=urn:eop:DOVE:MULTISPECTRAL_4m:20180811_081455_1054_3be7__coverage"

```

(continues on next page)

(continued from previous page)

```

→target="_blank">DescribeCoverage</a></li><li><a href="https://sso.vhr18.pass.
→copernicus.eu/ows?service=WCS&version=2.0.1&request=GetCoverage&
→coverageId=urn:eop:DOVE:MULTISPECTRAL_4m:20180811_081455_1054_3be7__coverage"
→target="_blank">GetCoverage</a></li></ul></li></ul></li></ul><h3>Metadata</h3>
→<table><tr><td>Cloud Cover</td><td>0.0</td></tr></table>]]>
  </summary>
</entry>
</feed>

```

Query inside a polygon and with set time interval

Query inside a bounding box

6.5 Downloading

6.5.1 WCS

WCS Capabilities

```

<?xml version='1.0' encoding='iso-8859-1'?>
<wcs:Capabilities updateSequence="20131219T132000Z" version="2.0.1" xmlns:crs="http://
→www.opengis.net/wcs/crs/1.0" xmlns:eop="http://www.opengis.net/eop/2.0" xmlns:gml=
→"http://www.opengis.net/gml/3.2" xmlns:gmlcov="http://www.opengis.net/gmlcov/1.0"
→xmlns:int="http://www.opengis.net/wcs/interpolation/1.0" xmlns:ogc="http://www.
→opengis.net/ogc" xmlns:om="http://www.opengis.net/om/2.0" xmlns:ows="http://www.
→opengis.net/ows/2.0" xmlns:rsub="http://www.opengis.net/wcs/range-subsetting/1.0"
→xmlns:scal="http://www.opengis.net/wcs/scaling/1.0" xmlns:swe="http://www.opengis.
→net/swe/2.0" xmlns:wcs="http://www.opengis.net/wcs/2.0" xmlns:wcsseo="http://www.
→opengis.net/wcs/wcsseo/1.0" xmlns:xlink="http://www.w3.org/1999/xlink" xmlns:xsi=
→"http://www.w3.org/2001/XMLSchema-instance" xsi:schemaLocation="http://www.opengis.
→net/ows/2.0 http://schemas.opengis.net/ows/2.0/owsAll.xsd http://www.opengis.net/
→wcs/wcsseo/1.0 http://schemas.opengis.net/wcs/wcsseo/1.0/wcsEOAll.xsd">
  <ows:ServiceIdentification>
    <ows:Title>PRISM Data Access Service (PASS) developed by EOX</ows:Title>
    <ows:Abstract>PRISM Data Access Service (PASS) developed by EOX</ows:Abstract>
    <ows:Keywords>
      <ows:Keyword>&lt;KEYWORDLIST&gt;</ows:Keyword>
    </ows:Keywords>
    <ows:ServiceType codeSpace="OGC">OGC WCS</ows:ServiceType>
    <ows:ServiceTypeVersion>2.0.1</ows:ServiceTypeVersion>
    <ows:ServiceTypeVersion>2.0.0</ows:ServiceTypeVersion>
    <ows:ServiceTypeVersion>1.1.2</ows:ServiceTypeVersion>
    <ows:ServiceTypeVersion>1.1.1</ows:ServiceTypeVersion>
    <ows:ServiceTypeVersion>1.1.0</ows:ServiceTypeVersion>
    <ows:ServiceTypeVersion>1.0.0</ows:ServiceTypeVersion>
    <ows:Profile>http://www.opengis.net/spec/WCS_application-profile_earth-
→observation/1.0/conf/eowcs</ows:Profile>
    <ows:Profile>http://www.opengis.net/spec/WCS_application-profile_earth-
→observation/1.0/conf/eowcs_get-kvp</ows:Profile>
    <ows:Profile>http://www.opengis.net/spec/WCS_service-extension_crs/1.0/conf/crs</
→ows:Profile>
    <ows:Profile>http://www.opengis.net/spec/WCS/2.0/conf/core</ows:Profile>
    <ows:Profile>http://www.opengis.net/spec/WCS_protocol-binding_get-kvp/1.0/conf/
→get-kvp</ows:Profile>
    <ows:Profile>http://www.opengis.net/spec/WCS_protocol-binding_post-xml/1.0/conf/

```

(continues on next page)

```

↪post-xml</ows:Profile>
  <ows:Profile>http://www.opengis.net/spec/GMLCOV/1.0/conf/gml-coverage</
↪ows:Profile>
  <ows:Profile>http://www.opengis.net/spec/GMLCOV/1.0/conf/multipart</ows:Profile>
  <ows:Profile>http://www.opengis.net/spec/GMLCOV/1.0/conf/special-format</
↪ows:Profile>
  <ows:Profile>http://www.opengis.net/spec/GMLCOV_geotiff-coverages/1.0/conf/
↪geotiff-coverage</ows:Profile>
  <ows:Profile>http://www.opengis.net/spec/WCS_geotiff-coverages/1.0/conf/geotiff-
↪coverage</ows:Profile>
  <ows:Profile>http://www.opengis.net/spec/WCS_service-model_crs-predefined/1.0/
↪conf/crs-predefined</ows:Profile>
  <ows:Profile>http://www.opengis.net/spec/WCS_service-extension_interpolation/1.0/
↪conf/interpolation</ows:Profile>
  <ows:Profile>http://www.opengis.net/spec/WCS_service-extension_range-subsetting/1.
↪0/conf/record-subsetting</ows:Profile>
  <ows:Profile>http://www.opengis.net/spec/WCS_service-extension_scaling/1.0/conf/
↪scaling</ows:Profile>
  <ows:Fees>None</ows:Fees>
  <ows:AccessConstraints>None</ows:AccessConstraints>
</ows:ServiceIdentification>
<ows:ServiceProvider>
  <ows:ProviderName>&lt;CONTACTORGANIZATION&gt;</ows:ProviderName>
  <ows:ProviderSite xlink:href="&lt;URL&gt;" xlink:type="simple"/>
  <ows:ServiceContact>
    <ows:IndividualName>&lt;CONTACTPERSON&gt;</ows:IndividualName>
    <ows:PositionName>&lt;CONTACTPOSITION&gt;</ows:PositionName>
    <ows:ContactInfo>
      <ows:Phone>
        <ows:Voice>&lt;CONTACTVOICETELEPHONE&gt;</ows:Voice>
        <ows:Facsimile>&lt;CONTACTFACSIMILETELEPHONE&gt;</ows:Facsimile>
      </ows:Phone>
      <ows:Address>
        <ows:DeliveryPoint>&lt;ADDRESS&gt;</ows:DeliveryPoint>
        <ows:City>&lt;CITY&gt;</ows:City>
        <ows:AdministrativeArea>&lt;STATEORPROVINCE&gt;</ows:AdministrativeArea>
        <ows:PostalCode>&lt;POSTCODE&gt;</ows:PostalCode>
        <ows:Country>&lt;COUNTRY&gt;</ows:Country>
        <ows:ElectronicMailAddress>&lt;CONTACTELECTRONICMAILADDRESS&gt;</
↪ows:ElectronicMailAddress>
      </ows:Address>
      <ows:OnlineResource xlink:href="http://eoxserver.org" xlink:type="simple"/>
      <ows:HoursOfService>&lt;HOURSOFSERVICE&gt;</ows:HoursOfService>
      <ows:ContactInstructions>&lt;CONTACTINSTRUCTIONS&gt;</ows:ContactInstructions>
    </ows:ContactInfo>
    <ows:Role>Service provider</ows:Role>
  </ows:ServiceContact>
</ows:ServiceProvider>
<ows:OperationsMetadata>
  <ows:Operation name="GetCapabilities">
    <ows:DCP>
      <ows:HTTP>
        <ows:Get xlink:href="pdas/ows?" xlink:type="simple"/>
        <ows:Post xlink:href="pdas/ows?" xlink:type="simple">
          <ows:Constraint name="PostEncoding">
            <ows:AllowedValues>

```

(continues on next page)

(continued from previous page)

```

        <ows:Value>XML</ows:Value>
      </ows:AllowedValues>
    </ows:Constraint>
  </ows:Post>
</ows:HTTP>
</ows:DCP>
</ows:Operation>
<ows:Operation name="DescribeCoverage">
  <ows:DCP>
    <ows:HTTP>
      <ows:Get xlink:href="pdas/ows?" xlink:type="simple"/>
      <ows:Post xlink:href="pdas/ows?" xlink:type="simple">
        <ows:Constraint name="PostEncoding">
          <ows:AllowedValues>
            <ows:Value>XML</ows:Value>
          </ows:AllowedValues>
        </ows:Constraint>
      </ows:Post>
    </ows:HTTP>
  </ows:DCP>
</ows:Operation>
<ows:Operation name="GetCoverage">
  <ows:DCP>
    <ows:HTTP>
      <ows:Get xlink:href="pdas/ows?" xlink:type="simple"/>
      <ows:Post xlink:href="pdas/ows?" xlink:type="simple">
        <ows:Constraint name="PostEncoding">
          <ows:AllowedValues>
            <ows:Value>XML</ows:Value>
          </ows:AllowedValues>
        </ows:Constraint>
      </ows:Post>
    </ows:HTTP>
  </ows:DCP>
</ows:Operation>
<ows:Operation name="DescribeEOCoverageSet">
  <ows:DCP>
    <ows:HTTP>
      <ows:Get xlink:href="pdas/ows?" xlink:type="simple"/>
      <ows:Post xlink:href="pdas/ows?" xlink:type="simple">
        <ows:Constraint name="PostEncoding">
          <ows:AllowedValues>
            <ows:Value>XML</ows:Value>
          </ows:AllowedValues>
        </ows:Constraint>
      </ows:Post>
    </ows:HTTP>
  </ows:DCP>
  <ows:Constraint name="CountDefault">
    <ows:NoValues/>
    <ows:DefaultValue>10</ows:DefaultValue>
  </ows:Constraint>
</ows:Operation>
<ows:Operation name="GetEOCoverageSet">
  <ows:DCP>
    <ows:HTTP>

```

(continues on next page)

```

<ows:Get xlink:href="pdas/ows?" xlink:type="simple"/>
<ows:Post xlink:href="pdas/ows?" xlink:type="simple">
  <ows:Constraint name="PostEncoding">
    <ows:AllowedValues>
      <ows:Value>XML</ows:Value>
    </ows:AllowedValues>
  </ows:Constraint>
</ows:Post>
</ows:HTTP>
</ows:DCP>
<ows:Constraint name="CountDefault">
  <ows:NoValues/>
  <ows:DefaultValue>10</ows:DefaultValue>
</ows:Constraint>
</ows:Operation>
</ows:OperationsMetadata>
<wcs:ServiceMetadata>
  <wcs:formatSupported>image/tiff</wcs:formatSupported>
  <wcs:formatSupported>image/jp2</wcs:formatSupported>
  <wcs:formatSupported>application/x-netcdf</wcs:formatSupported>
  <wcs:formatSupported>application/x-hdf</wcs:formatSupported>
  <wcs:Extension>
    <crs:CrsMetadata>
      <crs:crsSupported>http://www.opengis.net/def/crs/EPSG/0/4326</
↪ crs:crsSupported>
      <crs:crsSupported>http://www.opengis.net/def/crs/EPSG/0/3857</
↪ crs:crsSupported>
      <crs:crsSupported>http://www.opengis.net/def/crs/EPSG/0/3035</
↪ crs:crsSupported>
    </crs:CrsMetadata>
    <int:InterpolationMetadata>
      <int:InterpolationSupported>http://www.opengis.net/def/interpolation/OGC/1/
↪ average</int:InterpolationSupported>
      <int:InterpolationSupported>http://www.opengis.net/def/interpolation/OGC/1/
↪ nearest-neighbour</int:InterpolationSupported>
      <int:InterpolationSupported>http://www.opengis.net/def/interpolation/OGC/1/
↪ bilinear</int:InterpolationSupported>
      <int:InterpolationSupported>http://www.opengis.net/def/interpolation/OGC/1/
↪ cubic</int:InterpolationSupported>
      <int:InterpolationSupported>http://www.opengis.net/def/interpolation/OGC/1/
↪ cubic-spline</int:InterpolationSupported>
      <int:InterpolationSupported>http://www.opengis.net/def/interpolation/OGC/1/
↪ lanczos</int:InterpolationSupported>
      <int:InterpolationSupported>http://www.opengis.net/def/interpolation/OGC/1/
↪ mode</int:InterpolationSupported>
    </int:InterpolationMetadata>
  </wcs:Extension>
</wcs:ServiceMetadata>
<wcs:Contents>
  <wcs:Extension>
    <wcseo:DatasetSeriesSummary>
      <ows:WGS84BoundingBox>
        <ows:LowerCorner>12.136296 -24.639799</ows:LowerCorner>
        <ows:UpperCorner>71.230642 52.293404</ows:UpperCorner>
      </ows:WGS84BoundingBox>
      <wcseo:DatasetSeriesId>VHR_IMAGE_2018</wcseo:DatasetSeriesId>
    </wcseo:DatasetSeriesSummary>
  </wcs:Extension>
</wcs:Contents>

```

(continues on next page)

(continued from previous page)

```

<gml:TimePeriod gml:id="VHR_IMAGE_2018_timeperiod">
  <gml:beginPosition>2017-05-01T09:54:28Z</gml:beginPosition>
  <gml:endPosition>2019-10-06T07:03:34Z</gml:endPosition>
</gml:TimePeriod>
</wcseo:DatasetSeriesSummary>
<wcseo:DatasetSeriesSummary>
  <ows:WGS84BoundingBox>
    <ows:LowerCorner>27.574843 -24.639799</ows:LowerCorner>
    <ows:UpperCorner>71.230642 44.830837</ows:UpperCorner>
  </ows:WGS84BoundingBox>
  <wcseo:DatasetSeriesId>VHR_IMAGE_2018_Level_1</wcseo:DatasetSeriesId>
  <gml:TimePeriod gml:id="VHR_IMAGE_2018_Level_1_timeperiod">
    <gml:beginPosition>2017-05-01T09:54:28Z</gml:beginPosition>
    <gml:endPosition>2018-09-30T13:26:34Z</gml:endPosition>
  </gml:TimePeriod>
</wcseo:DatasetSeriesSummary>
<wcseo:DatasetSeriesSummary>
  <ows:WGS84BoundingBox>
    <ows:LowerCorner>27.574843 -24.639799</ows:LowerCorner>
    <ows:UpperCorner>71.230642 44.830837</ows:UpperCorner>
  </ows:WGS84BoundingBox>
  <wcseo:DatasetSeriesId>VHR_IMAGE_2018_Level_3</wcseo:DatasetSeriesId>
  <gml:TimePeriod gml:id="VHR_IMAGE_2018_Level_3_timeperiod">
    <gml:beginPosition>2017-05-01T09:54:28Z</gml:beginPosition>
    <gml:endPosition>2018-09-30T13:26:34Z</gml:endPosition>
  </gml:TimePeriod>
</wcseo:DatasetSeriesSummary>
</wcs:Extension>
</wcs:Contents>
</wcs:Capabilities>

```

EO Coverage set description and Coverage description

```

<?xml version='1.0' encoding='iso-8859-1'?>
<wcs:CoverageDescriptions xmlns:crs="http://www.opengis.net/wcs/crs/1.0" xmlns:eop=
↳ "http://www.opengis.net/eop/2.0" xmlns:gml="http://www.opengis.net/gml/3.2"
↳ xmlns:gmlcov="http://www.opengis.net/gmlcov/1.0" xmlns:int="http://www.opengis.net/
↳ wcs/interpolation/1.0" xmlns:ogc="http://www.opengis.net/ogc" xmlns:om="http://www.
↳ opengis.net/om/2.0" xmlns:ows="http://www.opengis.net/ows/2.0" xmlns:rsub="http://
↳ www.opengis.net/wcs/range-subsetting/1.0" xmlns:scal="http://www.opengis.net/wcs/
↳ scaling/1.0" xmlns:swe="http://www.opengis.net/swe/2.0" xmlns:wcs="http://www.
↳ opengis.net/wcs/2.0" xmlns:wcseo="http://www.opengis.net/wcs/wcseo/1.0" xmlns:xlink=
↳ "http://www.w3.org/1999/xlink" xmlns:xsi="http://www.w3.org/2001/XMLSchema-instance
↳ " xsi:schemaLocation="http://www.opengis.net/wcs/wcseo/1.0 http://schemas.opengis.
↳ net/wcs/wcseo/1.0/wcsEOAll.xsd">
  <wcs:CoverageDescription gml:id="urn:eop:DOVE:MULTISPECTRAL_4m:20180811_081455_1054_
↳ 3be7__coverage">
    <gml:boundedBy>
      <gml:Envelope axisLabels="y x" srsDimension="2" srsName="http://www.opengis.net/
↳ def/crs/EPSG/0/3035" uomLabels="m m">
        <gml:lowerCorner>2817620.000 5518044.000</gml:lowerCorner>
        <gml:upperCorner>2825972.000 5524488.000</gml:upperCorner>
      </gml:Envelope>
    </gml:boundedBy>
    <wcs:CoverageId>urn:eop:DOVE:MULTISPECTRAL_4m:20180811_081455_1054_3be7__coverage
↳ </wcs:CoverageId>

```

(continues on next page)

```

<gml:cov:metadata>
  <gml:cov:Extension>
    <wcseo:EOMetadata>
      <eop:EarthObservation gml:id="eop_urn:eop:DOVE:MULTISPECTRAL_4m:20180811_
↪081455_1054_3be7__coverage">
        <om:phenomenonTime>
          <gml:TimePeriod gml:id="phen_time_urn:eop:DOVE:MULTISPECTRAL_
↪4m:20180811_081455_1054_3be7__coverage">
            <gml:beginPosition>2018-08-11T08:14:55Z</gml:beginPosition>
            <gml:endPosition>2018-08-11T08:14:55Z</gml:endPosition>
          </gml:TimePeriod>
        </om:phenomenonTime>
        <om:resultTime>
          <gml:TimeInstant gml:id="res_time_urn:eop:DOVE:MULTISPECTRAL_
↪4m:20180811_081455_1054_3be7__coverage">
            <gml:timePosition>2018-08-11T08:14:55Z</gml:timePosition>
          </gml:TimeInstant>
        </om:resultTime>
        <om:procedure/>
        <om:observedProperty/>
        <om:featureOfInterest>
          <eop:Footprint gml:id="footprint_urn:eop:DOVE:MULTISPECTRAL_4m:20180811_
↪081455_1054_3be7__coverage">
            <eop:multiExtentOf>
              <gml:MultiSurface gml:id="multisurface_urn:eop:DOVE:MULTISPECTRAL_
↪4m:20180811_081455_1054_3be7__coverage" srsName="EPSG:4326">
                <gml:surfaceMember>
                  <gml:Polygon gml:id="polygon_urn:eop:DOVE:MULTISPECTRAL_
↪4m:20180811_081455_1054_3be7__coverage_1">
                    <gml:exterior>
                      <gml:LinearRing>
                        <gml:posList>47.29778796 26.00330821 47.29784395 26.
↪00300545 47.29852855 26.00098039 47.33176050 25.98961353 47.35564999 25.98157482 47.
↪35572189 25.98204011 47.36693204 25.97820059 47.37260630 26.01455420 47.37197192 26.
↪01658883 47.37098788 26.01863079 47.36976416 26.02036682 47.36834411 26.02173541 47.
↪36677806 26.02268812 47.31293985 26.04698765 47.31114307 26.04751063 47.30931486 26.
↪04748521 47.30753117 26.04691252 47.30586607 26.04581637 47.30438870 26.04424235 47.
↪30409927 26.04377423 47.29778796 26.00330821</gml:posList>
                      </gml:LinearRing>
                    </gml:exterior>
                  </gml:Polygon>
                </gml:surfaceMember>
              </gml:MultiSurface>
            </eop:multiExtentOf>
          </eop:Footprint>
        </om:featureOfInterest>
      </om:result/>
    <eop:metaDataProperty>
      <eop:EarthObservationMetaData>
        <eop:identifier>urn:eop:DOVE:MULTISPECTRAL_4m:20180811_081455_1054_
↪3be7__coverage</eop:identifier>
        <eop:acquisitionType>NOMINAL</eop:acquisitionType>
        <eop:status>ARCHIVED</eop:status>
      </eop:EarthObservationMetaData>
    </eop:metaDataProperty>
  </eop:EarthObservation>

```

(continues on next page)

(continued from previous page)

```

    </wcseo:EOMetadata>
  </gmlcov:Extension>
</gmlcov:metadata>
<gml:domainSet>
  <gml:RectifiedGrid dimension="2" gml:id="urn:eop:DOVE:MULTISPECTRAL_4m:20180811_
↪081455_1054_3be7__coverage_grid">
    <gml:limits>
      <gml:GridEnvelope>
        <gml:low>0 0</gml:low>
        <gml:high>1610 2087</gml:high>
      </gml:GridEnvelope>
    </gml:limits>
    <gml:axisLabels>y x</gml:axisLabels>
    <gml:origin>
      <gml:Point gml:id="urn:eop:DOVE:MULTISPECTRAL_4m:20180811_081455_1054_3be7__
↪coverage_grid_origin" srsName="http://www.opengis.net/def/crs/EPSSG/0/3035">
        <gml:pos>2825972.000 5518044.000</gml:pos>
      </gml:Point>
    </gml:origin>
    <gml:offsetVector srsName="http://www.opengis.net/def/crs/EPSSG/0/3035">0.000_
↪4.000</gml:offsetVector>
    <gml:offsetVector srsName="http://www.opengis.net/def/crs/EPSSG/0/3035">-4.000_
↪0.000</gml:offsetVector>
  </gml:RectifiedGrid>
</gml:domainSet>
<gmlcov:rangeType>
  <swe:DataRecord>
    <swe:field name="red">
      <swe:Quantity definition="http://www.opengis.net/def/property/OGC/0/Radiance
↪">
        <swe:description>Red Channel</swe:description>
        <swe:nilValues>
          <swe:NilValues>
            <swe:nilValue reason="http://www.opengis.net/def/nil/OGC/0/unknown">0
↪</swe:nilValue>
          </swe:NilValues>
        </swe:nilValues>
        <swe:uom code="W.m-2.Sr-1"/>
        <swe:constraint>
          <swe:AllowedValues>
            <swe:interval>0 65535</swe:interval>
            <swe:significantFigures>5</swe:significantFigures>
          </swe:AllowedValues>
        </swe:constraint>
      </swe:Quantity>
    </swe:field>
    <swe:field name="green">
      <swe:Quantity definition="http://www.opengis.net/def/property/OGC/0/Radiance
↪">
        <swe:description>Green Channel</swe:description>
        <swe:nilValues>
          <swe:NilValues>
            <swe:nilValue reason="http://www.opengis.net/def/nil/OGC/0/unknown">0
↪</swe:nilValue>
          </swe:NilValues>
        </swe:nilValues>
      </swe:Quantity>
    </swe:field>
  </swe:DataRecord>
</gmlcov:rangeType>
</gmlcov:metadata>
</gml:Coverage>
</gml:Coverage>

```

(continues on next page)

```

    <swe:uom code="W.m-2.Sr-1"/>
    <swe:constraint>
      <swe:AllowedValues>
        <swe:interval>0 65535</swe:interval>
        <swe:significantFigures>5</swe:significantFigures>
      </swe:AllowedValues>
    </swe:constraint>
  </swe:Quantity>
</swe:field>
<swe:field name="blue">
  <swe:Quantity definition="http://www.opengis.net/def/property/OGC/0/Radiance
↪">
    <swe:description>Blue Channel</swe:description>
    <swe:nilValues>
      <swe:NilValues>
        <swe:nilValue reason="http://www.opengis.net/def/nil/OGC/0/unknown">0
↪</swe:nilValue>
      </swe:NilValues>
    </swe:nilValues>
    <swe:uom code="W.m-2.Sr-1"/>
    <swe:constraint>
      <swe:AllowedValues>
        <swe:interval>0 65535</swe:interval>
        <swe:significantFigures>5</swe:significantFigures>
      </swe:AllowedValues>
    </swe:constraint>
  </swe:Quantity>
</swe:field>
<swe:field name="nir">
  <swe:Quantity definition="http://www.opengis.net/def/property/OGC/0/Radiance
↪">
    <swe:description>Nir Channel</swe:description>
    <swe:nilValues>
      <swe:NilValues>
        <swe:nilValue reason="http://www.opengis.net/def/nil/OGC/0/unknown">0
↪</swe:nilValue>
      </swe:NilValues>
    </swe:nilValues>
    <swe:uom code="W.m-2.Sr-1"/>
    <swe:constraint>
      <swe:AllowedValues>
        <swe:interval>0 65535</swe:interval>
        <swe:significantFigures>5</swe:significantFigures>
      </swe:AllowedValues>
    </swe:constraint>
  </swe:Quantity>
</swe:field>
</swe:DataRecord>
</gmlcov:rangeType>
<wcs:ServiceParameters>
  <wcs:CoverageSubtype>RectifiedDataset</wcs:CoverageSubtype>
  <wcs:nativeFormat>image/tiff</wcs:nativeFormat>
</wcs:ServiceParameters>
</wcs:CoverageDescription>
</wcs:CoverageDescriptions>

```

6.5.2 WCS Download Links

Download two EO Coverages together as a zipped archive

Full coverage in default configuration

Spatial subset

Range subset

Scaled down

Specifying size as number of pixels in both axis

Specific format and interpolation

Specific projection

Download returning HTML exception in case of too large image requested

6.5.3 DSEO

One entire product

6.5.4 HTTP access

HTTP proxy access to a single coverage, allowing range headers - add 'Range: bytes=0-500' to request headers

6.6 Processing

List available processes on WPS via GetCapabilities request

Get parameters of a WPS process via DescribeProcess request

All following sample Execute WPS requests can be sent towards DEM Free collection on URL: <https://sso.demf.pass.copernicus.eu/ows> as a POST request with following request body:

6.6.1 WPS 1.0

Execute DemProcessing Hillshade with JPG output for a smaller part of DEM Tile:

```
<?xml version="1.0" encoding="UTF-8"?>
<wps:Execute xmlns:wps="http://www.opengis.net/wps/1.0.0" xmlns:ows="http://www.
↪opengis.net/ows/1.1" xmlns:xlink="http://www.w3.org/1999/xlink" xmlns:xsi="http://
↪www.w3.org/2001/XMLSchema-instance" service="WPS" version="1.0.0"
↪xsi:schemaLocation="http://www.opengis.net/wps/1.0.0 http://schemas.opengis.net/wps/
↪1.0.0/wpsExecute_request.xsd">
  <ows:Identifier>DemProcessing</ows:Identifier>
  <wps>DataInputs>
    <wps:Input>
      <ows:Identifier>algorithm</ows:Identifier>
      <wps>Data>
        <wps:LiteralData>ZevenbergenThorne</wps:LiteralData>
      </wps>Data>
    </wps:Input>
    <wps:Input>
      <ows:Identifier>azimuth</ows:Identifier>
      <wps>Data>
```

(continues on next page)

(continued from previous page)

```

        <wps:LiteralData>30</wps:LiteralData>
    </wps>Data>
</wps:Input>
<wps:Input>
    <ows:Identifier>altitude</ows:Identifier>
    <wps>Data>
        <wps:LiteralData>25</wps:LiteralData>
    </wps>Data>
</wps:Input>
<wps:Input>
    <ows:Identifier>z_factor</ows:Identifier>
    <wps>Data>
        <wps:LiteralData>2</wps:LiteralData>
    </wps>Data>
</wps:Input>
<wps:Input>
    <ows:Identifier>bbox</ows:Identifier>
    <wps>Data>
        <wps:LiteralData>9.21525795269168,45.47809186378467,9.56925469004894,45.
↪814144066068515</wps:LiteralData>
    </wps>Data>
</wps:Input>
<wps:Input>
    <ows:Identifier>identifier</ows:Identifier>
    <wps>Data>
        <wps:LiteralData>hillshade</wps:LiteralData>
    </wps>Data>
</wps:Input>
<wps:Input>
    <ows:Identifier>scale</ows:Identifier>
    <wps>Data>
        <wps:LiteralData>111120</wps:LiteralData>
    </wps>Data>
</wps:Input>
<wps:Input>
    <ows:Identifier>coverage</ows:Identifier>
    <wps>Data>
        <wps:LiteralData>urn:eop:DLR:CDEM30:Copernicus_DSM_10_N45_00_E009_
↪00:VelVH-2019_2__DEM1__coverage</wps:LiteralData>
    </wps>Data>
</wps:Input>
</wps>DataInputs>
<wps:ResponseForm>
    <wps:RawDataOutput mimeType="image/jpeg">
        <ows:Identifier>result</ows:Identifier>
    </wps:RawDataOutput>
</wps:ResponseForm>
</wps:Execute>

```

Execute DemProcessing Slope with GeoTIFF output for a smaller part of DEM Tile

```

<?xml version="1.0" encoding="UTF-8"?>
<wps:Execute xmlns:wps="http://www.opengis.net/wps/1.0.0" xmlns:ows="http://www.
↪opengis.net/ows/1.1" xmlns:xlink="http://www.w3.org/1999/xlink" xmlns:xsi="http://
↪www.w3.org/2001/XMLSchema-instance" service="WPS" version="1.0.0"
↪xsi:schemaLocation="http://www.opengis.net/wps/1.0.0 http://schemas.opengis.

```

(continues on next page)

(continued from previous page)

```

↪net/wps/1.0.0/wpsExecute_request.xsd">
  <ows:Identifier>DemProcessing</ows:Identifier>
  <wps>DataInputs>
    <wps:Input>
      <ows:Identifier>algorithm</ows:Identifier>
      <wps>Data>
        <wps:LiteralData>ZevenbergenThorne</wps:LiteralData>
      </wps>Data>
    </wps:Input>
    <wps:Input>
      <ows:Identifier>bbox</ows:Identifier>
      <wps>Data>
        <wps:LiteralData>9.69731341761827,45.61022889477977,9.933855016313213,45.
↪854927100326265</wps:LiteralData>
      </wps>Data>
    </wps:Input>
    <wps:Input>
      <ows:Identifier>identifier</ows:Identifier>
      <wps>Data>
        <wps:LiteralData>slopesshade</wps:LiteralData>
      </wps>Data>
    </wps:Input>
    <wps:Input>
      <ows:Identifier>scale</ows:Identifier>
      <wps>Data>
        <wps:LiteralData>111120</wps:LiteralData>
      </wps>Data>
    </wps:Input>
    <wps:Input>
      <ows:Identifier>coverage</ows:Identifier>
      <wps>Data>
        <wps:LiteralData>urn:eop:DLR:CDEM30:Copernicus_DSM_10_N45_00_E009_
↪00:VelVH-2019_2__DEM1__coverage</wps:LiteralData>
      </wps>Data>
    </wps:Input>
  </wps>DataInputs>
  <wps:ResponseForm>
    <wps:RawDataOutput mimeType="image/tiff">
      <ows:Identifier>result</ows:Identifier>
    </wps:RawDataOutput>
  </wps:ResponseForm>
</wps:Execute>

```

Execute DemProcessing Aspect with PNG output for a smaller part of DEM Tile

```

<?xml version="1.0" encoding="UTF-8"?>
<wps:Execute xmlns:wps="http://www.opengis.net/wps/1.0.0" xmlns:ows="http://www.
↪opengis.net/ows/1.1" xmlns:xlink="http://www.w3.org/1999/xlink" xmlns:xsi="http://
↪www.w3.org/2001/XMLSchema-instance" service="WPS" version="1.0.0"
↪xsi:schemaLocation="http://www.opengis.net/wps/1.0.0 http://schemas.opengis.
↪net/wps/1.0.0/wpsExecute_request.xsd">
  <ows:Identifier>DemProcessing</ows:Identifier>
  <wps>DataInputs>
    <wps:Input>
      <ows:Identifier>algorithm</ows:Identifier>
      <wps>Data>

```

(continues on next page)

(continued from previous page)

```

        <wps:LiteralData>Horn</wps:LiteralData>
      </wps>Data>
    </wps:Input>
  <wps:Input>
    <ows:Identifier>bbox</ows:Identifier>
    <wps>Data>
      <wps:LiteralData>9.574964314845024,45.62280783038122,9.811992349776046,45.
→929967883360526</wps:LiteralData>
    </wps>Data>
  </wps:Input>
  <wps:Input>
    <ows:Identifier>identifier</ows:Identifier>
    <wps>Data>
      <wps:LiteralData>aspect</wps:LiteralData>
    </wps>Data>
  </wps:Input>
  <wps:Input>
    <ows:Identifier>coverage</ows:Identifier>
    <wps>Data>
      <wps:LiteralData>urn:eop:DLR:CDEM30:Copernicus_DSM_10_N45_00_E009_
→00:VelVH-2019_2_DEM1__coverage</wps:LiteralData>
    </wps>Data>
  </wps:Input>
</wps>DataInputs>
<wps:ResponseForm>
  <wps:RawDataOutput mimeType="image/png">
    <ows:Identifier>result</ows:Identifier>
  </wps:RawDataOutput>
</wps:ResponseForm>
</wps:Execute>

```

Execute DemProcessing Contour 50m interval with GeoJSON output for a smaller part of DEM Tile

```

<?xml version="1.0" encoding="UTF-8"?>
<wps:Execute xmlns:wps="http://www.opengis.net/wps/1.0.0" xmlns:ows="http://www.
→opengis.net/ows/1.1" xmlns:xlink="http://www.w3.org/1999/xlink" xmlns:xsi="http://
→www.w3.org/2001/XMLSchema-instance" service="WPS" version="1.0.0"
→xsi:schemaLocation="http://www.opengis.net/wps/1.0.0 http://schemas.opengis.
→net/wps/1.0.0/wpsExecute_request.xsd">
  <ows:Identifier>DemProcessing</ows:Identifier>
  <wps>DataInputs>
    <wps:Input>
      <ows:Identifier>interval</ows:Identifier>
      <wps>Data>
        <wps:LiteralData>20</wps:LiteralData>
      </wps>Data>
    </wps:Input>
    <wps:Input>
      <ows:Identifier>bbox</ows:Identifier>
      <wps>Data>
        <wps:LiteralData>9.620312088764628,45.62525481243668,9.86011633020019,45.
→90094812401907</wps:LiteralData>
      </wps>Data>
    </wps:Input>
    <wps:Input>
      <ows:Identifier>identifier</ows:Identifier>

```

(continues on next page)

(continued from previous page)

```

    <wps:Data>
      <wps:LiteralData>contours</wps:LiteralData>
    </wps:Data>
  </wps:Input>
  <wps:Input>
    <ows:Identifier>coverage</ows:Identifier>
    <wps:Data>
      <wps:LiteralData>urn:eop:DLR:CDEM30:Copernicus_DSM_10_N45_00_E009_
↪00:VelVH-2019_2__DEM1__coverage</wps:LiteralData>
    </wps:Data>
  </wps:Input>
</wps>DataInputs>
<wps:ResponseForm>
  <wps:RawDataOutput mimeType="image/png">
    <ows:Identifier>result</ows:Identifier>
  </wps:RawDataOutput>
</wps:ResponseForm>
</wps:Execute>

```

Execute Height Profile with 500m interval with PNG output over a drawn line

```

<?xml version="1.0" encoding="UTF-8"?>
<wps:Execute xmlns:wps="http://www.opengis.net/wps/1.0.0" xmlns:ows="http://www.
↪opengis.net/ows/1.1" xmlns:xlink="http://www.w3.org/1999/xlink" xmlns:xsi="http://
↪www.w3.org/2001/XMLSchema-instance" service="WPS" version="1.0.0"
↪xsi:schemaLocation="http://www.opengis.net/wps/1.0.0 http://schemas.opengis.
↪net/wps/1.0.0/wpsExecute_request.xsd">
  <ows:Identifier>GetHeightProfile</ows:Identifier>
  <wps>DataInputs>
    <wps:Input>
      <ows:Identifier>method</ows:Identifier>
      <wps:Data>
        <wps:LiteralData>near</wps:LiteralData>
      </wps:Data>
    </wps:Input>
    <wps:Input>
      <ows:Identifier>interval</ows:Identifier>
      <wps:Data>
        <wps:LiteralData>500</wps:LiteralData>
      </wps:Data>
    </wps:Input>
    <wps:Input>
      <ows:Identifier>coverage</ows:Identifier>
      <wps:Data>
        <wps:LiteralData>urn:eop:DLR:CDEM30:Copernicus_DSM_10_N45_00_E009_
↪00:VelVH-2019_2__DEM1__coverage</wps:LiteralData>
      </wps:Data>
    </wps:Input>
    <wps:Input>
      <ows:Identifier>line</ows:Identifier>
      <wps:Data>
        <wps:LiteralData>9.500409968046846,45.71824013054435,9.65864814096691,45.
↪87158433935348</wps:LiteralData>
      </wps:Data>
    </wps:Input>
  </wps>DataInputs>

```

(continues on next page)

```

<wps:ResponseForm>
  <wps:RawDataOutput mimeType="image/png">
    <ows:Identifier>profile</ows:Identifier>
  </wps:RawDataOutput>
</wps:ResponseForm>
</wps:Execute>

```

6.6.2 WPS 2.0

Execute call for GetStatistics on DEM collection:

```

<wps:Execute service="WPS" version="2.0.0"
  xmlns:wps="http://www.opengis.net/wps/2.0"
  xmlns:ows="http://www.opengis.net/ows/2.0"
  xmlns:xlink="http://www.w3.org/1999/xlink"
  xmlns:xsi="http://www.w3.org/2001/XMLSchema-instance" xsi:schemaLocation="http://
  ↪www.opengis.net/wps/2.0 http://schemas.opengis.net/wps/2.0/wpsExecute.xsd"
  response="raw"
  mode="sync"
>
  <ows:Identifier>GetStatistics</ows:Identifier>
  <wps:Input id="bbox">
    <wps:Data>
      <wps:BoundingBoxData crs="http://www.opengis.net/def/crs/EPSSG/0/4326">
        <ows:LowerCorner>44.0972 38.4119</ows:LowerCorner>
        <ows:UpperCorner>44.8435 39.2293</ows:UpperCorner>
      </wps:BoundingBoxData>
    </wps:Data>
  </wps:Input>
  <wps:Input id="collection">
    <wps:Data mimeType="text/xml">
      <wps:LiteralValue>DEM</wps:LiteralValue>
    </wps:Data>
  </wps:Input>
  <wps:Output id="statistics" transmission="value" mimeType="application/json"></
  ↪wps:Output>
</wps:Execute>

```